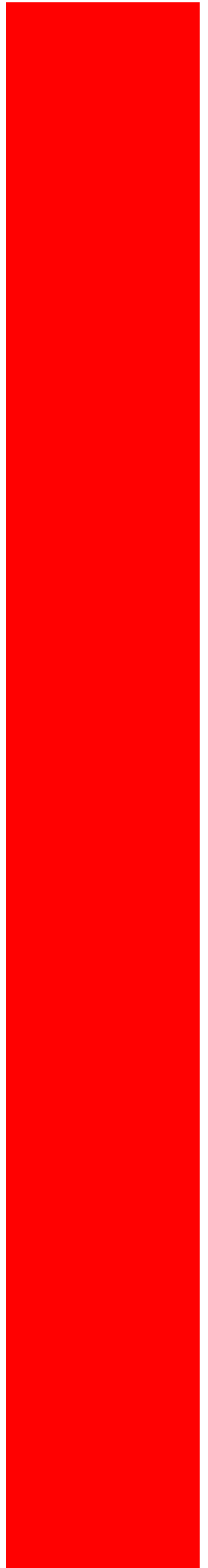


KODICOM

DigiNet Center

User Guide

DigiNet



Center Program?

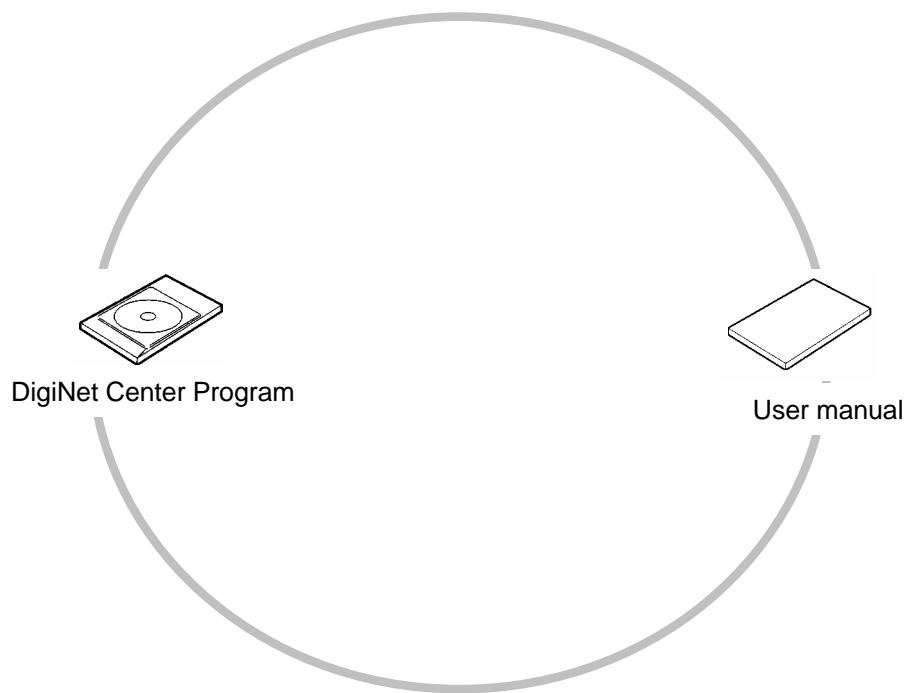
It's a program that enables you watch and control the site DVR. Therefore, you don't need a DVR to watch site DVR's image.

System spec.(recommended)

- ▶ CPU : Celeron 433MHz over
- ▶ MEMORY : 64MB over
- ▶ VGA CARD : AGP 16MB over
- ▶ HDD : 100MB over
- ▶ O/S : Windows98 SE / Windows ME / Windows 2000 / Windows NT
- ▶ Communication : MODEM, LAN, ISDN, Leased Circuit
- ▶ DirectX : v7.0 over

Contents

When you purchased DigiNet Center program, make sure that the following contents are Included.



DigiNet Center User Manual

1. CONNECTION	7
1.1 ISDN, DSU CONNECTION.....	7
1.2 MODEM, LAN CONNECTION.....	8
2. Center program installation	9
3. Center program execute	12
4. Main screen setup	13
5. Center setup	14
6. How to connect to Site DVR	18
6.1 Connection on LAN.....	19
6.2 Connection on PSTN,ISDN.....	22
7. Playing current image	27
8. Change to search mode	28
8.1 Date and time select for searching.....	29
8.2 Replaying searched image.....	30
8.3 Magnifying and brightness control of searched image.....	31
8.4 Data backup.....	32
8.5 Printing searched image.....	40
9. Selection between PAN/TILT & surveillance mode	42
9.1 Control of PAN/TILT mode.....	43
10. Site DVR setup	44
10.1 Hardware setup.....	45
10.2 Motion detection setup.....	49
10.3 Recording Schedule setup.....	53
10.4 Site information.....	48
10.5 System setup.....	49
10.6 Other.....	63
11. K-Remote Backup Server	51
11.1 Change Password.....	65
11.2 Backup log.....	65
12. Searching backup data	51
13. Audio Playback	69
14. 2Way Audio	70
15. Intelli Upgrader	76
15.1 Intelli Upgrader.....	76
15.2 Remoteness upgrade.....	77

2. Web DigiNet Manual



1. Web DigiNet Setup.....	80
1.1 Web DigiNet installation.....	82
2. Web DigiNet Connection setup.....	84

1. DigiNet Center Manual

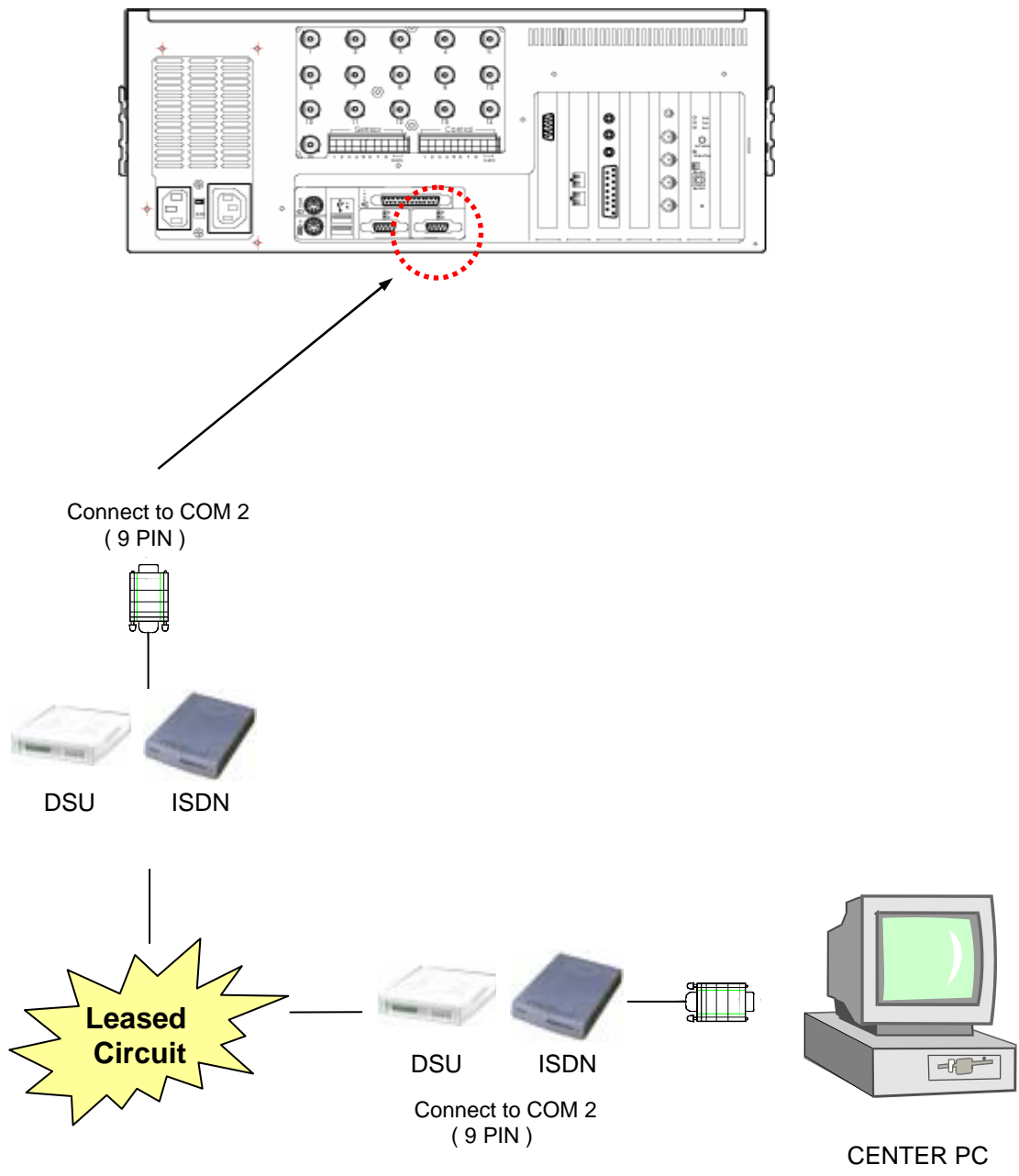
1. How to connect Communication line	7
1.1 Connect ISDN, DSU, exclusive line.....	7
1.2 MODEM, LAN connection.....	8
2. How to install Center program	9
3. Execute Center Program	12
4. Main Screen setup	13
5. Center Communication setup	14
6. How to connect SITE	18
6.1 LAN connection.....	19
6.2 PSTN,ISDN connection.....	22
7. How to signal current image	27
8. Switch to search mode	28
8.1 Search date and select time.....	29
8.2 How to replay search screen.....	30
8.3 How to magnify search screen and control brightness.....	31
8.4 Backup data.....	32
8.5 Print searched screen.....	40
9. PAN/TILT & Converting watch mode	42
9.1 How to control PAN/TILT mode.....	43
10. Setup Remote site	44
10.1 Setup hardware.....	45
10.2 Setup motion detection.....	49
10.3 Setup recording schedule.....	53
10.4 Site information.....	57
10.5 System setup.....	58
10.6 Other.....	63
11. K-Remote Backup Server	64
11.1 Change Password.....	65
11.2 Backup log.....	65
12. How to search backup data	67
13. Audio Replay	69
14. 2Way Audio	70
15. Intelli Upgrader	76
15.1 Execute Intelli Upgrader.....	76
11.2 Remoteness upgrade.....	77



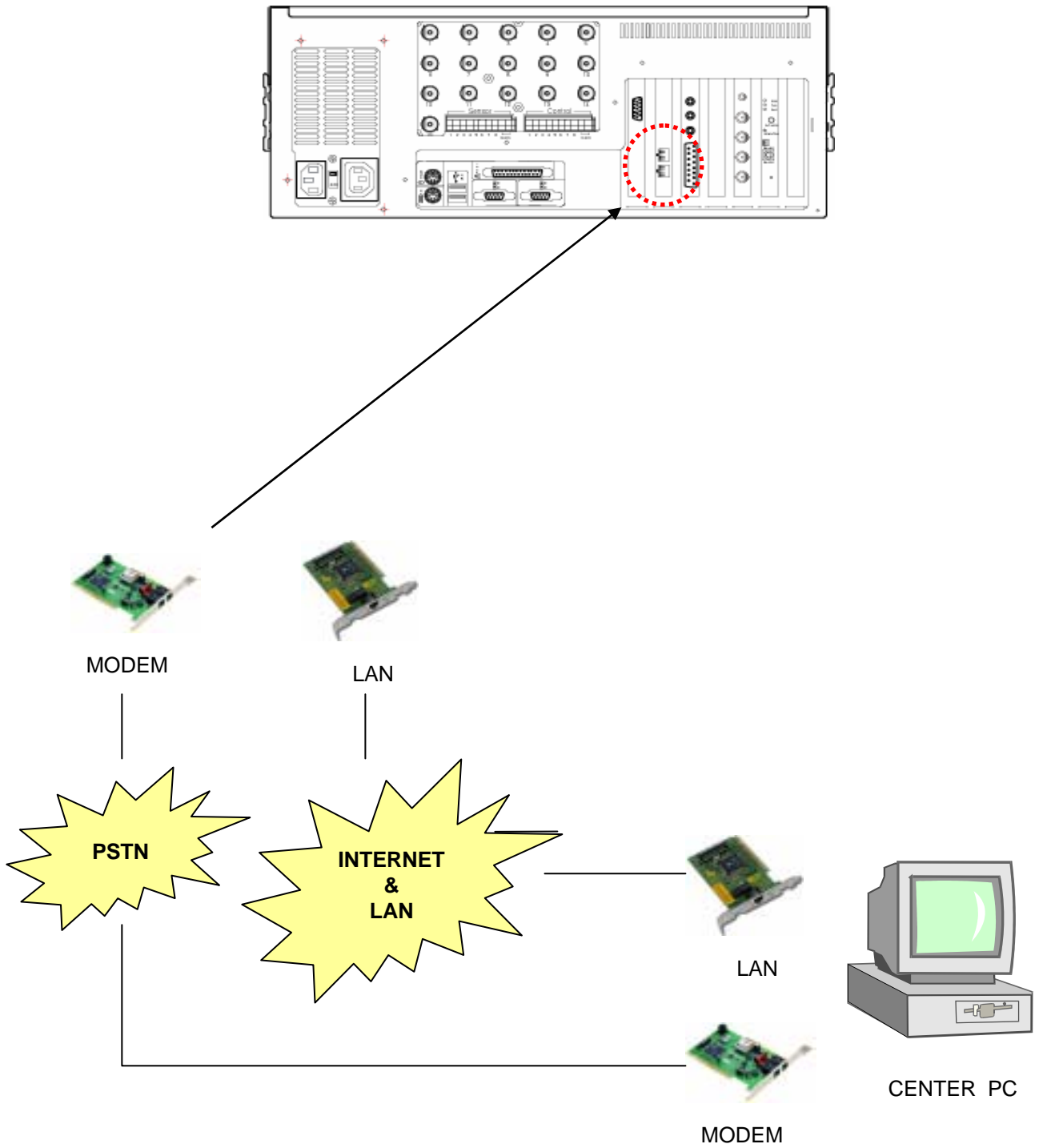
1. Connection



1.1 ISDN, DSU, Leased Circuit

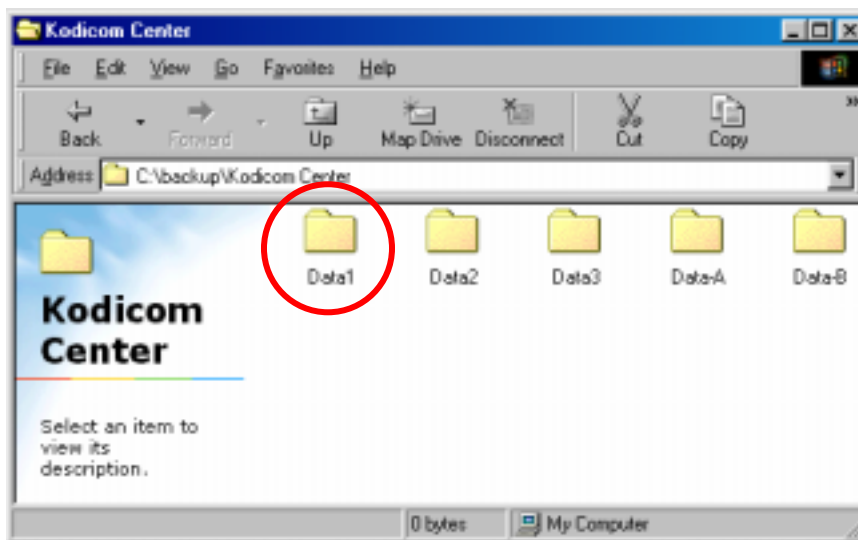


1.2 MODEM, LAN connection

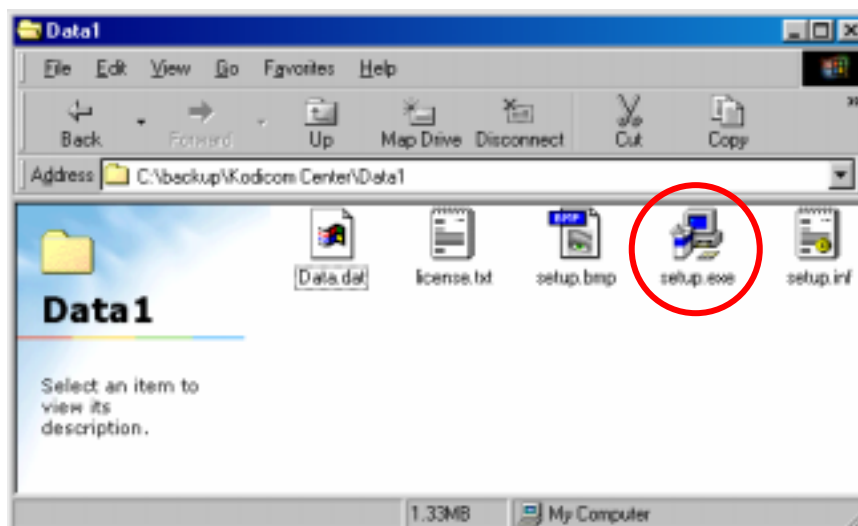


2. Center Program Installation

- 1 Insert Center program CD into CD-ROM and click the folder that has center program.
Then double-click on folder <disk1>.



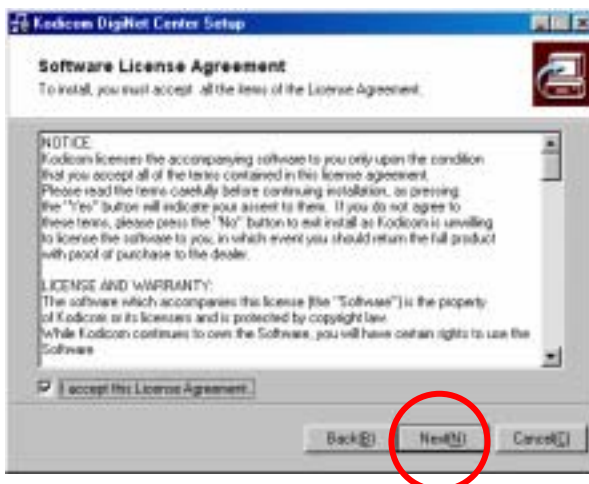
- 2 Execute a file called <setup>



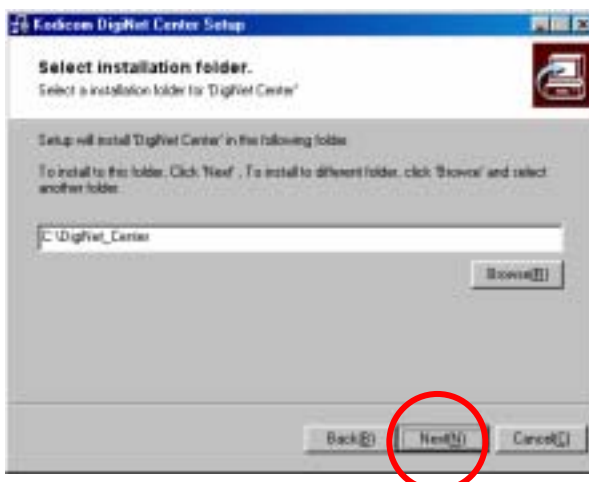
- 3 Click <Next>



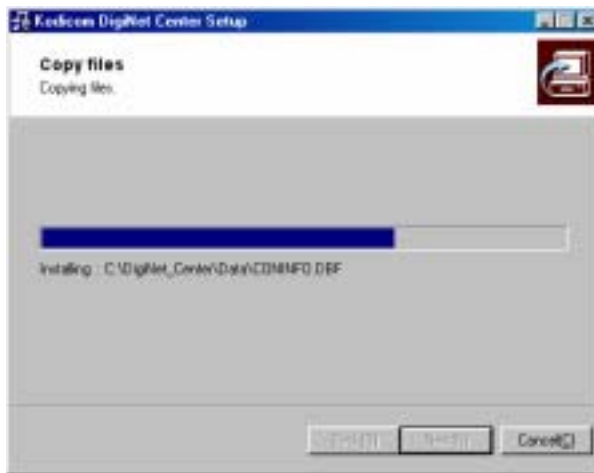
- 4 Check on 'I agree to the License Agreement' and click <Next>



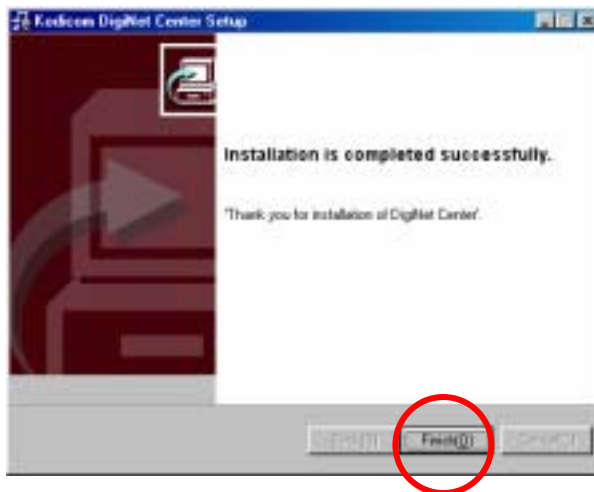
- 5 Select the path where you want to install DigiNet Center program and click <Next>



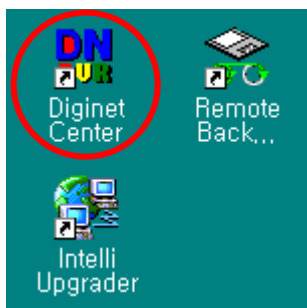
- 6 Installation will start.



- 7 Click <Next>



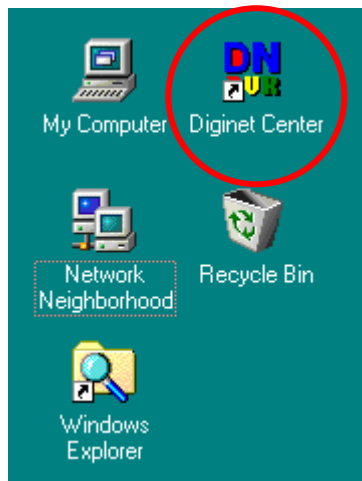
- 8 DigiNet Center icon will be created in the background as below.
Double-click DigiNet icon and run Center program.



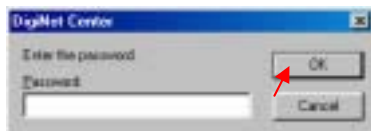
3. Center program execute



- 1 Execute center program by double-double clicking DigiNet icon on desktop.



- 2 DigiNet check the password when it starts.
(It doesn't have a password as a default.)



Password setup window



Caution : It is impossible to change password when you forgot it.

(Please write it down on other place.)

We recommend that the administrator to change password.

Refer to page 17 for password change.

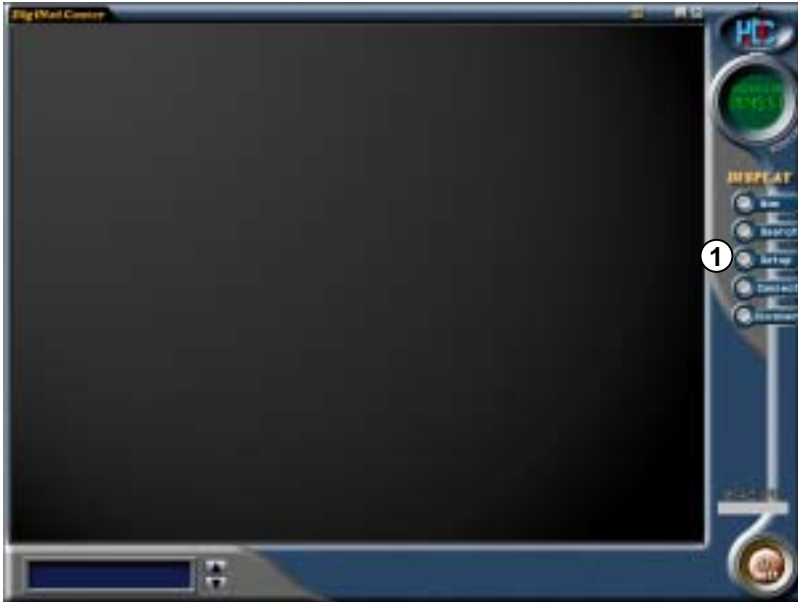
4. Main screen setup



First screen

- ① Displays current date and time.
- ② [Now] Play current image
- ③ [Search] Change to search mode
- ④ [Setup] setup button
- ⑤ [Connect] connection button
- ⑥ [Disconnect] disconnection button
- ⑦ [transmit / receive status] Displays the status of transmit and receiving between site and center.
- ⑧ [Quit] Quit DigiNet Center program
- ⑨ The IP address and location of the connected site is shown.

5.Center communication setup

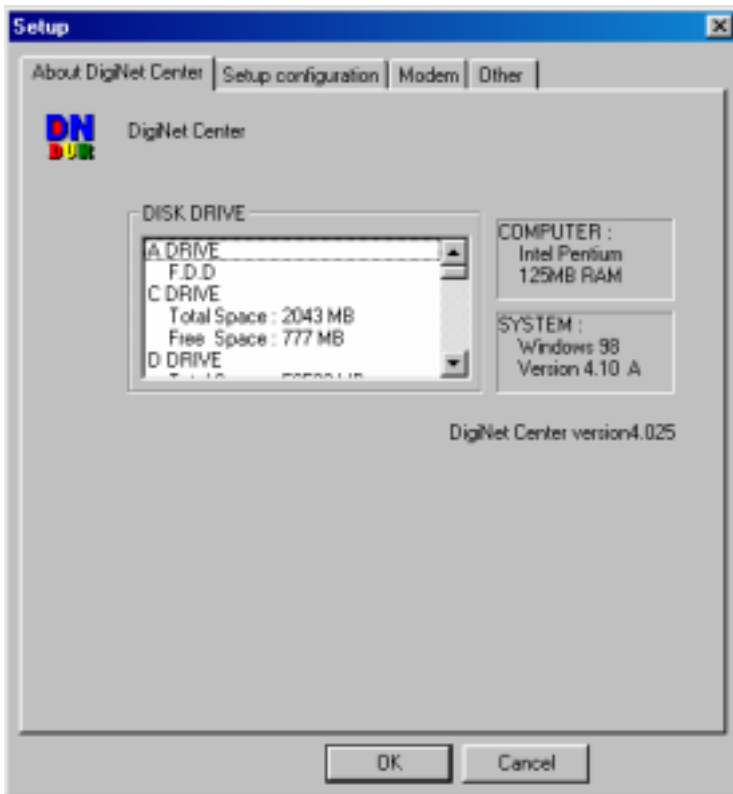


How to setup

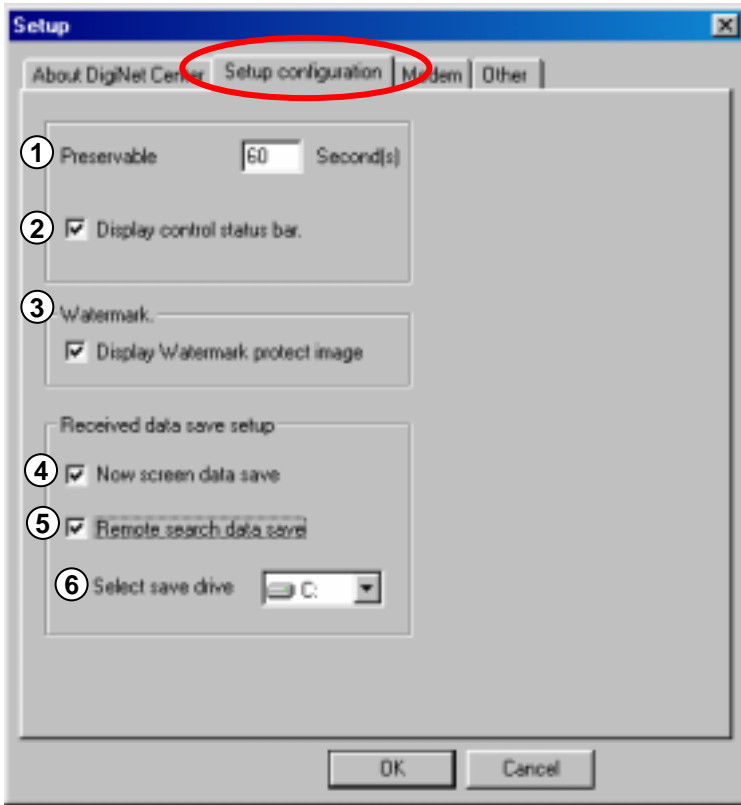
- 1 [Setup]
Configure system environment



Click this button.



- 2 Center setup will be displayed.
[OK]
Pressing <OK> brings you to the initial screen.



Setup Configuration

- 1** [Modem connection time]
Center system disconnect the connection after the selected time if there is no response.
- 2** [Display of manual control status]
Displays manual control button on the screen.
- 3** [Water Mark Setting]

 - Water Mark Authentication Mark: This function indicates Watermark authentication mark.
 - Watermark authentication mark will be displayed on image when you select this option.
- 4** [Store current image]

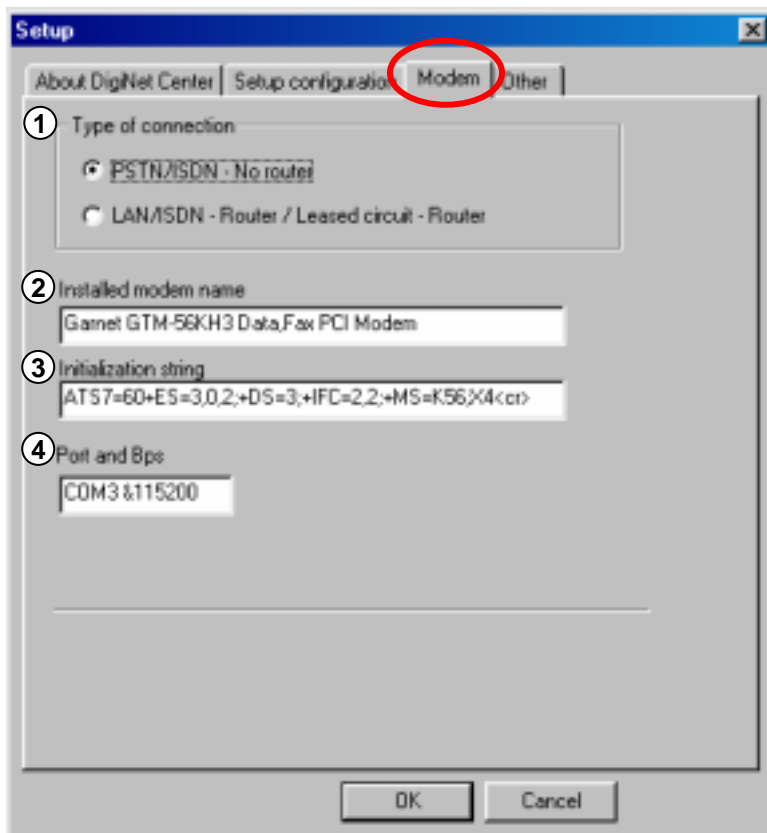
 - When transmitting image after connecting to a site, this function will simultaneously store the image to a designated HDD.
- 5** [Store searched image]

 - When you search for recorded image after connecting to the site, this function will simultaneously store the image to a designated HDD.
- 6** [Select storing drive]

 - When searching for recorded data and current image after connecting to site, select HDD that will be recorded from the Center.

- Applicable storing media.

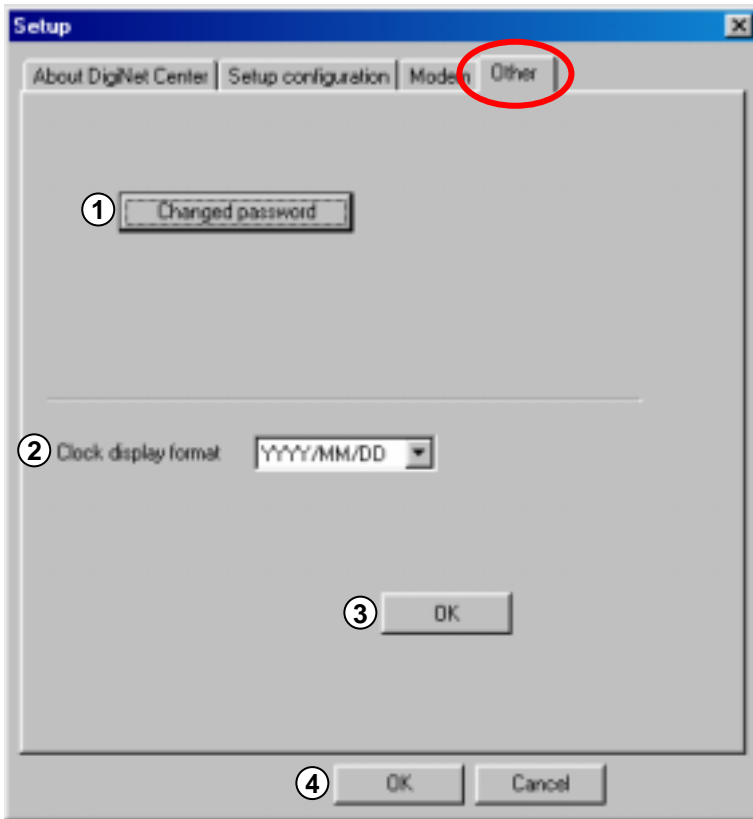
You can only record in network drive and in drives which can support the following; Hard disk or remote drive (DVD-RAM, ZIP, MOD, ORB, USB HDD etc.).



How to setup

- 1** [Select line type]
 - Select communication line type you wish to use. Select 'PSTN/ISDN (NO ROUTER)' when using regular phone line or ISDN (Without Router).
 - Select 'LAN/ISDN(ROUTER)/LEASED CIRCUIT (ROUTER)' when using LAN or ISDN/ISDN only line (With ROUTER).
- 2** [Installed modem name]
 - This will automatically recognize and show modem that is installed in the system. (It will only automatically recognize the modem type when ('PSTN/ISDN(NO ROUTER)') is selected).
- 3** [Initial order]

This will automatically recognize initial order from window from the modem that is installed in the system.
- 4** [Port and communication speed]
 - This will automatically recognize communication port and its speed that is installed in modem.



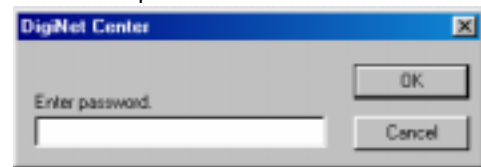
Etc.

- 1 [Change password]
 - This is used to change password.
(There is no password in the factory setup.)

- Enter password and click <ok>



- Enter new password and click <ok>



- 2 [Clock Display Format]
 - This is a format for displaying current date and time.



- 3 [OK]
 - Click <Ok>after entering data.
- 4 [OK]
 - You can go back to initial menu by pressing <Ok> button.

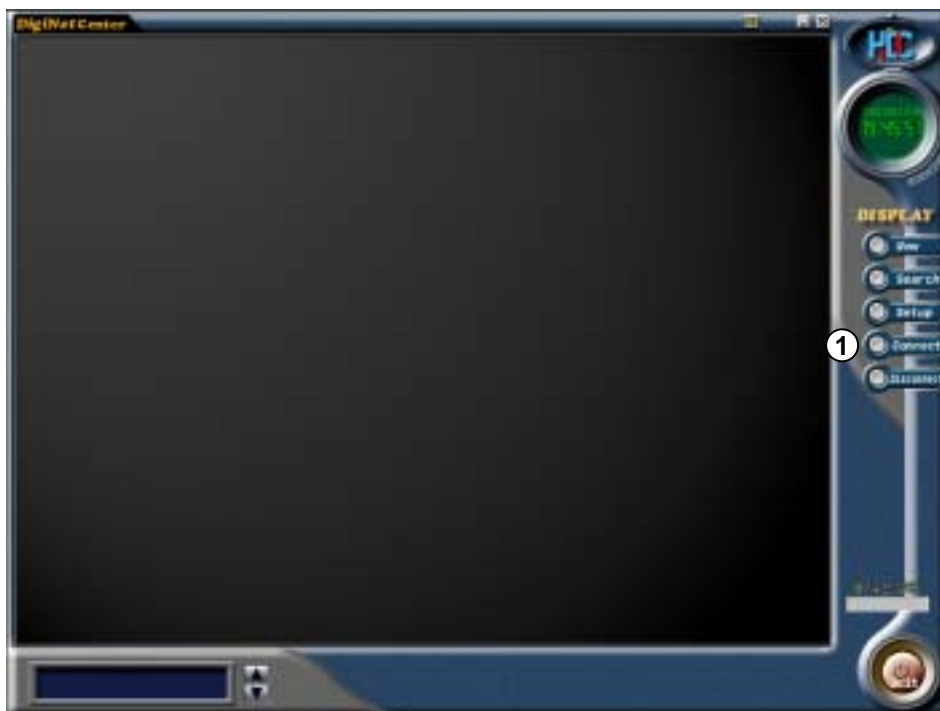
6. How to connect to site DVR



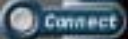
1 [Connect]

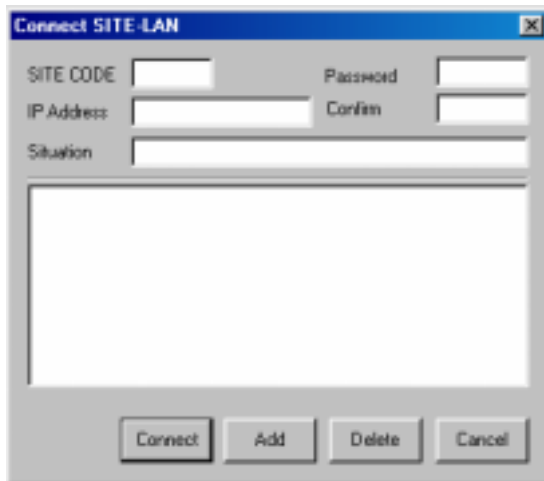
You can connect to site DVR with this.

Click this  on the initial screen.

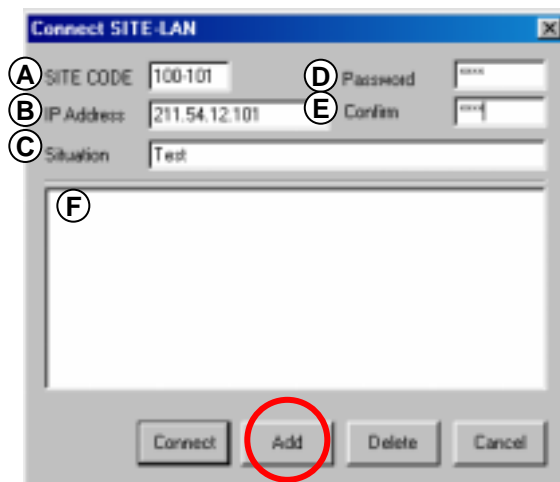


6.1 Connection on LAN

- 1  Below button will be displayed if you click left button.



- 2 [Add]
Enter Site Code, IP address, Port number, location and password.
Then click <Add>button.



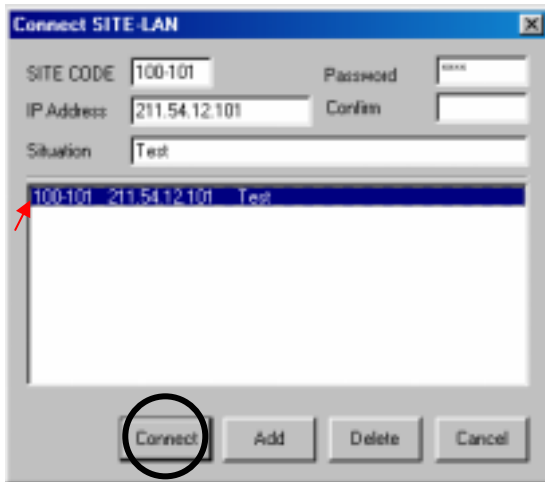
- Ⓐ [SITE CODE] : You can add site code like this order : 100-001,100-002,100-003...
- Ⓑ [IP address] : Enter IP address of the SITE
- Ⓒ [Situation] : Enter the situation of the site DVR
- Ⓓ [Password] : Enter the password of the site DVR,
(communication setup → connection setup → password)
- Ⓔ [Confirm] : Enter the password of the site DVR for confirmation.
- Ⓕ [List of the sites to connect] : You can register multiple sites information by entering the site code, IP address, location and password. Then you can edit them if you want later.



When connecting to site from center, site code and password will be searched simultaneously, and if site code or password is not correct then connection will be terminated.

3 [connect]

Select the place you want to connect and click <connect> button.

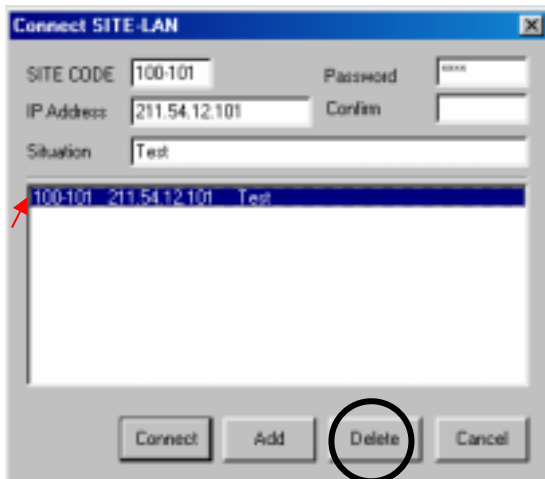


Center tries to connect to site like below screen.

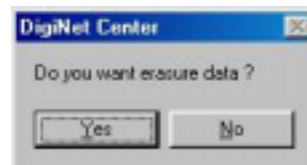


4 [Delete]

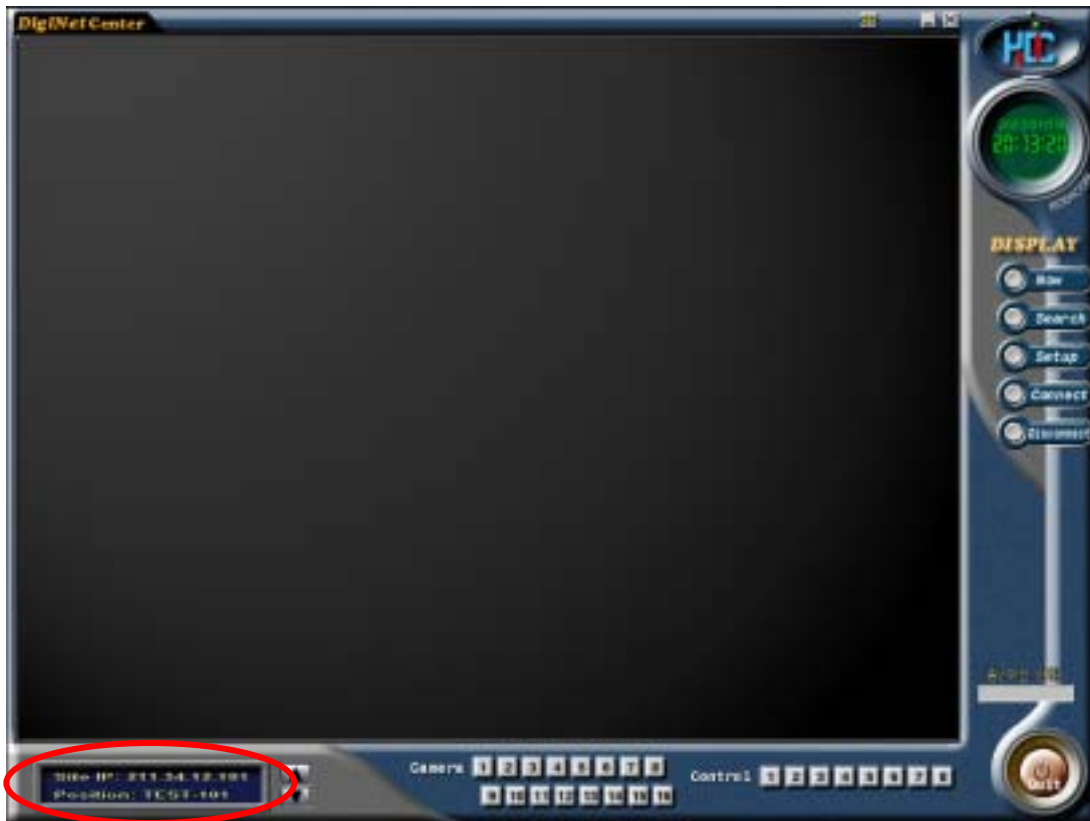
To delete the selected site, click the site and press <Delete> button.




If you click <OK>, the data will be erased.

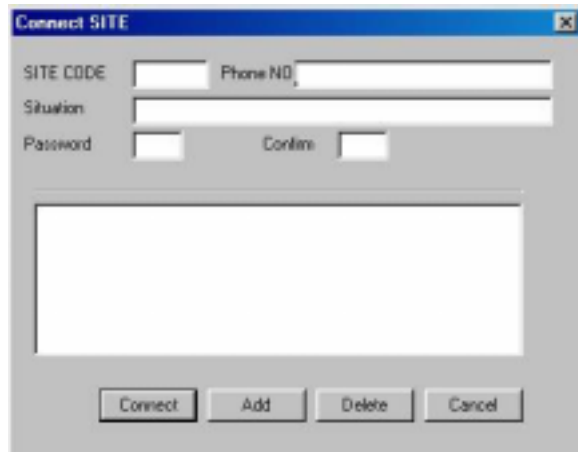


- 5 If it gets connected, below screen will be displayed.



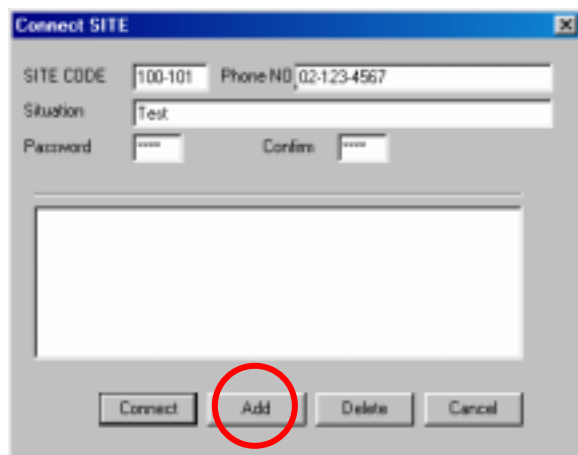
6.2 Connection on PSTN, ISDN

- 1  This button displays the image on the right.



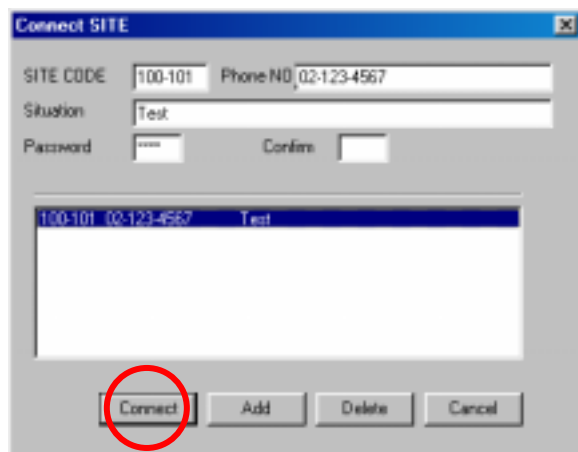
The dialog box titled "Connect SITE" contains the following fields: "SITE CODE" (empty), "Phone NO" (empty), "Situation" (empty), "Password" (empty), and "Confirm" (empty). Below these fields is a large empty list box. At the bottom are four buttons: "Connect", "Add", "Delete", and "Cancel".

- 2 [Add]
Designate site code, phone number, installing place, and password, then press add.



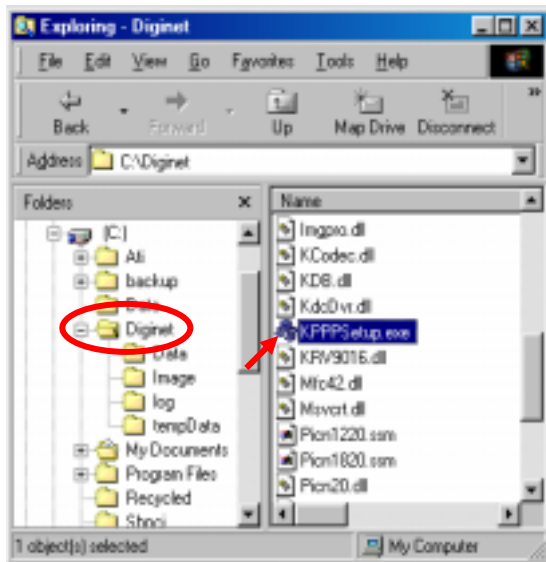
The dialog box titled "Connect SITE" now has the following values: "SITE CODE" is "100-101", "Phone NO" is "02-123-4567", "Situation" is "Test", "Password" is "****", and "Confirm" is "****". The list box is still empty. The "Add" button at the bottom is circled in red.

- 3 [Connect]
Select the place you want to connect and press [connect] button.



The dialog box titled "Connect SITE" now has the list box populated with one entry: "100-101 02-123-4567 Test". The "Connect" button at the bottom is circled in red.

PPP setup for PSTN/ISDN without router



1 [PPP setup using KPPPSetup.exe]

- To setup PSTN a modem should be installed in Windows.
- After you finish the installation of modem, click KPPPSetup.exe in DigiNet folder of DVR and PC. Then PPP setup for PSTN/ISDN will be done automatically.

2 [Requirements before installation]

- In order to use **KPPPSetup.exe** DVR or PC may ask you to put in the Windows98 Second Edition CD-ROM or the folder that has Windows98 SE.
- This program may not work properly when the system doesn't have a modem installed. Execute KPPPSetup.exe after finishing installation of a modem on the system.

3 [PSTN, ISDN setup on Windows98]

- Install a modem for PSTN connection, or ISDN Terminal Adapter for ISDN.
- Execute **KPPPSetup.exe**.
- You need to reboot the system when the PPP setup is done.
- After rebooting, please check out the connection between DigiNet and center PC by using center and site program.

4 [Following items will be installed when you execute KPPPSetup.exe]

- Dial-up networking
- Dial-up server
- Phone dialer
- TCP/IP Protocol
- Change Dial-up server properties



The system may request you Windows98 SE CD on the CD-ROM drive or HDD. If it does, assign the location that has Windows98 SE or CD-ROM drive.

⑤ [Note]

- If TCP/IP or Dial-up adapter is already installed, they will not be installed again.
- Any window of Network properties or dial-up server properties should not be open before executing KPPPSetup.exe
- Do not execute KPPPSetup.exe twice at one instant. (You should wait until you see a message that your system will reboot.)
- On DigiNet communication setup of site software select 'LAN'. On center software select 'PSTN/ISDN(NO ROUTER).
- KPPPSetup.exe should be installed on both DigiNet center and site.
- Please check after installation if the connection works well between center and site.

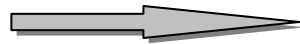
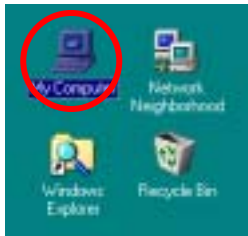
When you use ISDN connection without using router, follow the same procedure with PSTN by executing KPPPSetup.exe. Then it will be setup automatically.

KPPPSetup.exe should be installed both Center and Site.

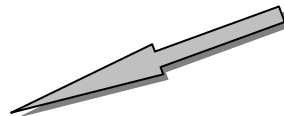
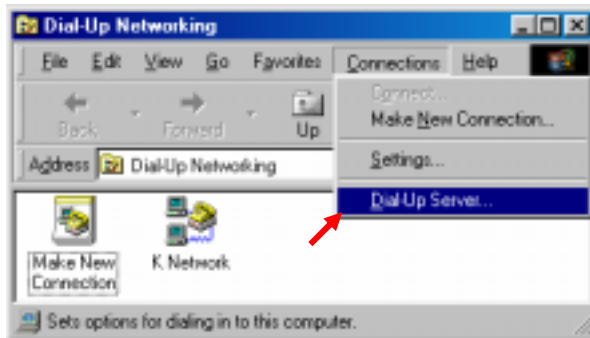
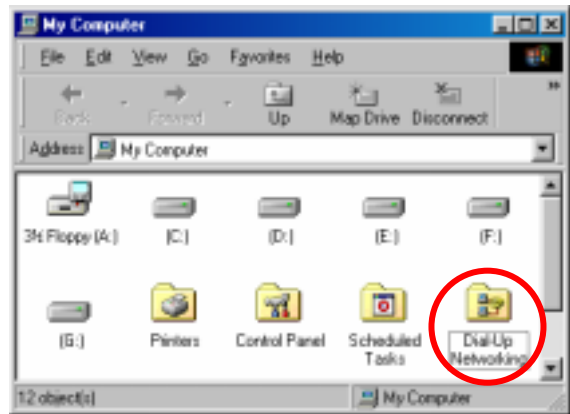
Manual ISDN Setup without router

- ① [When there are a few dial-up servers depending on the ISDN modem]
- Basically ISDN setup will be done automatically if you run KPPPSetup.exe. However, there might be cases that you need to setup manually when there are a few dial-up servers depending on the ISDN modem. In that case please follow this step.
 - When the ISDN modem supports a few dial-up servers you should select a proper dial-up server that supports ISDN among the dial-up servers.
 - Above step should be done after executing KPPPSetup.exe.

- ② [Manual Setup]

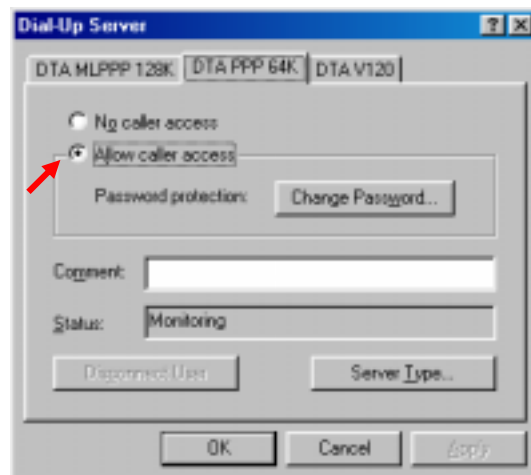


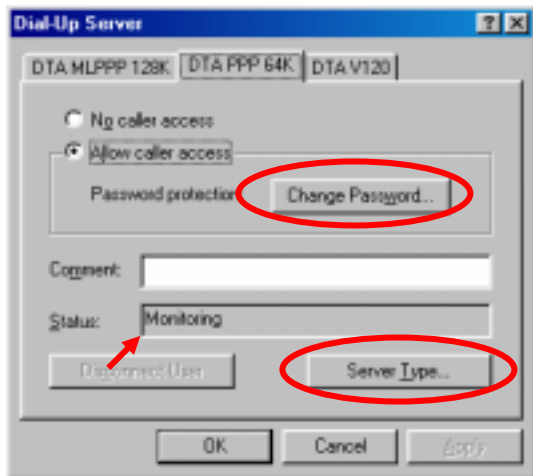
- Select 'Dial-up networking' on 'My Computer' in background



- 'Connections' → 'Dial-up server'

- Choose "Allow caller access"

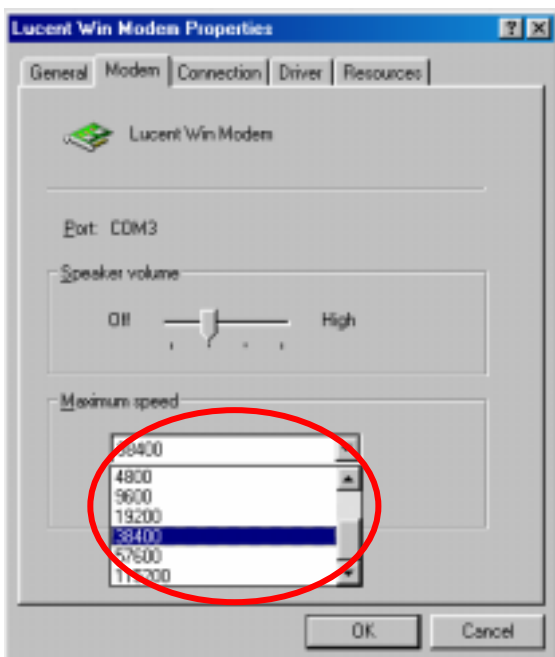
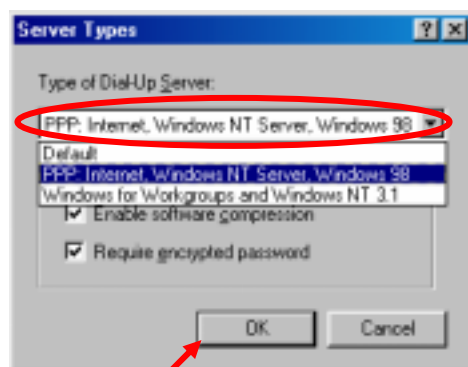




Enter to change password and input '1234' for all three blanks.

- Choose "PPP: Internet, Windows NT server, Windows 98" on 'Server Type'.
- Check "Enable Software Compression" and "Require Encrypted Password" and click "Apply" button and "OK".

- Make sure if there is "Monitoring" in the "Status".(The type of dial-up server is different depending on the ISDN modem as you see above.)



[Line speed]

- When connection gets disconnected frequently using PSTN, or when communication status is unstable, execute "Modem" from "Properties" and select "Register information" from "General".
- From 'Modem register information' window,
 - Select '38400' for maximum speed if PSTN
 - Select '115200' for maximum speed if ISDN
- For safety of communication line, modem for center and site should be set to equal.
(Connection may not work well if something like noise and old line etc. are accompanied).

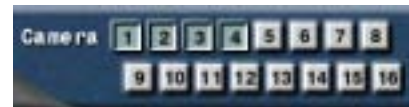
7. Playing current image



How to setup

1 Camera(select the camera)

- Select the camera to view

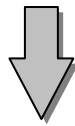


- Uninstalled cameras don't be displayed on screen.

2 [Now](current image)




- Click this button.
- This button plays the current image.



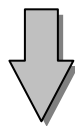
Site image will be displayed.



Below message will appear  if you didn't select the camera.





8. Change to search mode




How to setup

1 [Search mode]

- Select this button if you want to switch to  search screen.
- In order to switch the current image to search screen, press  and stop the Image transmission to switch to search screen.

2 [End Search]

- Click [DISPLAY] button to be switched to  search screen

This is the screen that is changed to [Search] mode.

8.1 Select Date and time for searching



1 [Select date and time]



Year, month, day, hour, minute will be displayed for the ones you want to search.



2 Month, year to search

3 Date to search

4 Hour and minute to search

8.2 Replaying searched image



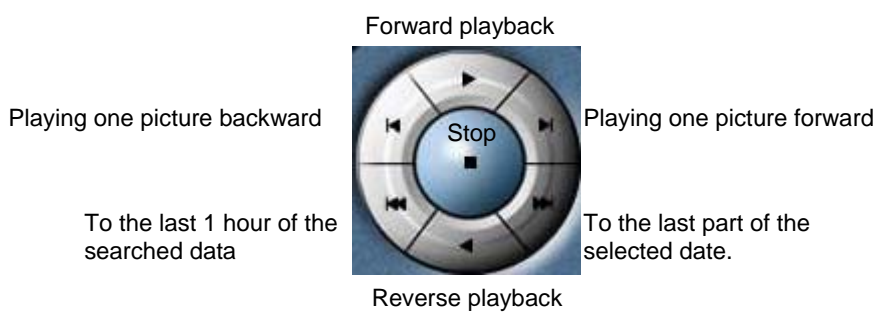
1 [Camera]

- Select the camera number you want to search.
- Selected camera number will be indicated by darker color as shown below.



2 [Playback searched image]

- You can adjust searching speed by Skip and Delay.



3 [SKIP]

- A number of designated output for searched image will be ignored but it will give output to monitor.
- Designated number is not the number of image but it is an internal value for the DigiNet program.
- You can only designate 0 and 1 for Center program

4 [DELAY]

- Time for searched image to be displayed on the screen per page.
Ex) 0 (fastest) ~ 50 (slowest)

8.3 Magnify and control brightness of searched image



• Basically zooming a small image gets a little bit distorted image. But DigiNet System has developed own compression engine code (K-Engine CODEC) to minimize this problem.

• Zooming in and out is applicable to only one camera. Multiple image zooming is not possible so stop playing multiple images but just select one channel to zoom.

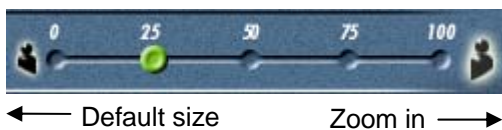
1 [Bright]

- Adjust brightness of the image



2 [ZOOM]

- Adjust Zooms in or out



8.4 Data Backup



1 [Back up]



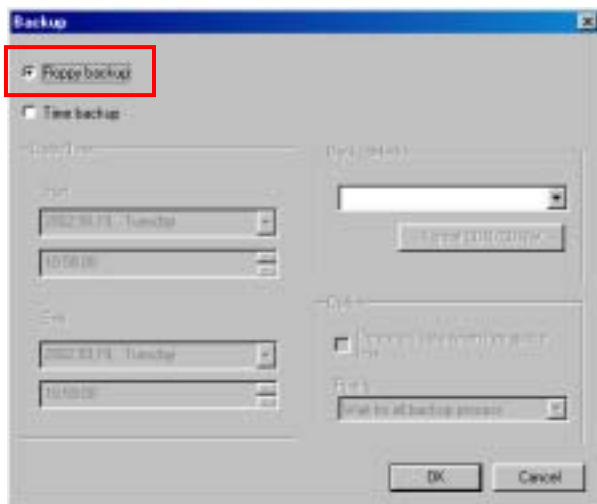
You can backup and print the searched image by clicking the button on the left.




When you click on this button on the left, following backup window will appear

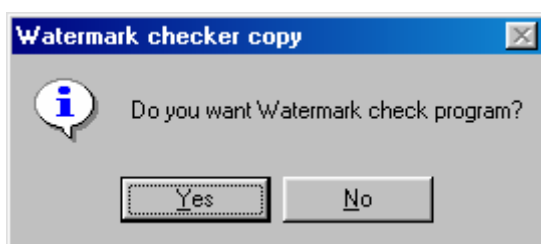


Backup onto Floppy Disk



1 [Backup floppy disk]

- While you are searching for recorded data, select the image to backup and click this icon.  Then “Data Backup” window will appear.
- When you backup the image per page, floppy disk will stored them as BMP or JPEG format so you can use it with the S/W which is used for a normal image.
- You can only choose [Floppy backup] when you have selected backup button when one of the screens is zoomed out while searching.
- Select [Floppy backup] from the above “Data Backup” window and click “Ok”.
Then below “watermark checker copy” window will appear.

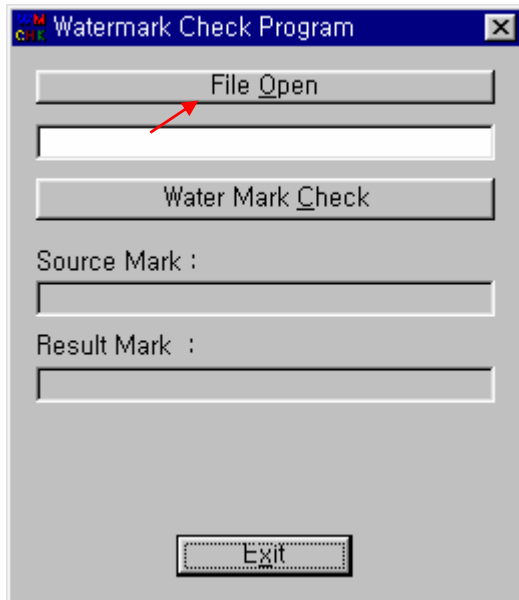


- If you click “Yes” for the selected image, ‘Watermark check program’ will backup to a Floppy Diskette.
- You can backup the single images as many as you want on a floppy disk, however, you only need to store the watermark check program once.

The image will be copied onto Floppy diskette in BMP or JPG format. The image will be copied with the ‘watermark checker program’ to check to see whether the image was illegally modified or not.

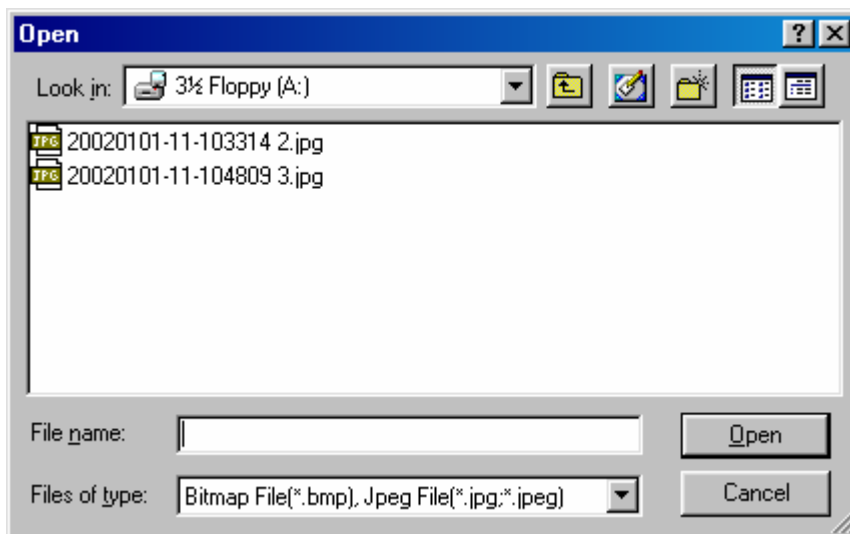
Using watermark checking program

Run the watermark check program by running the file 'WMChecker.exe' on the floppy disk. The following image will appear.

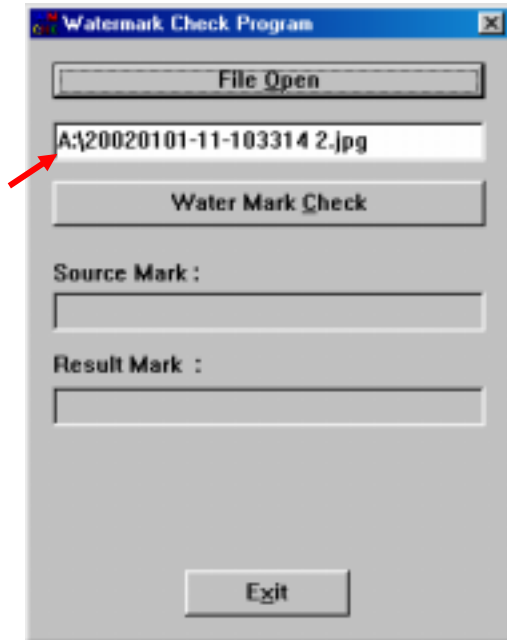


1 [WaterMark check]

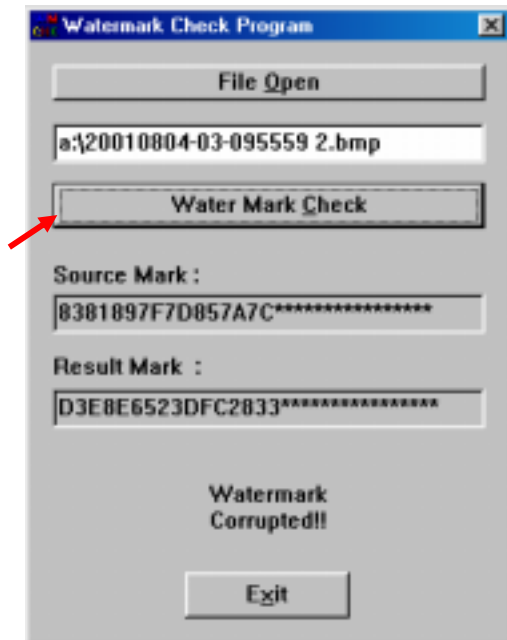
- If you execute 'WMChecker.exe' which is copied to the Floppy Disk with the backup image following 'WaterMark' checking program appears.
- If you click 'File Open' button, below widow will appear to check authentication of the image.



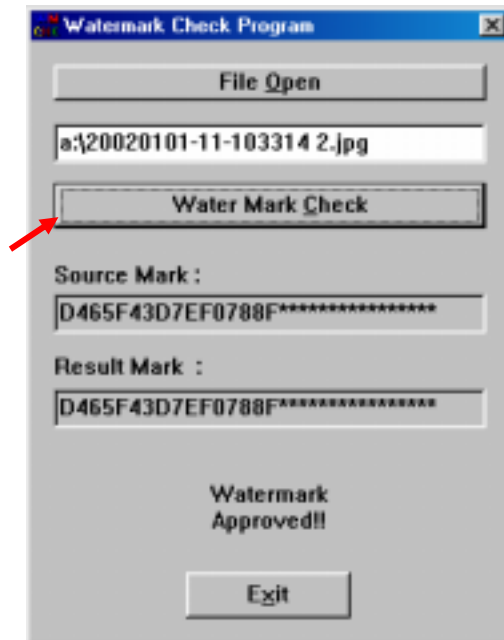
- Once opened the name of the file will appear in the window. Select Watermark check to verify the image.



- Once verification has been completed windows similar to those below will appear.

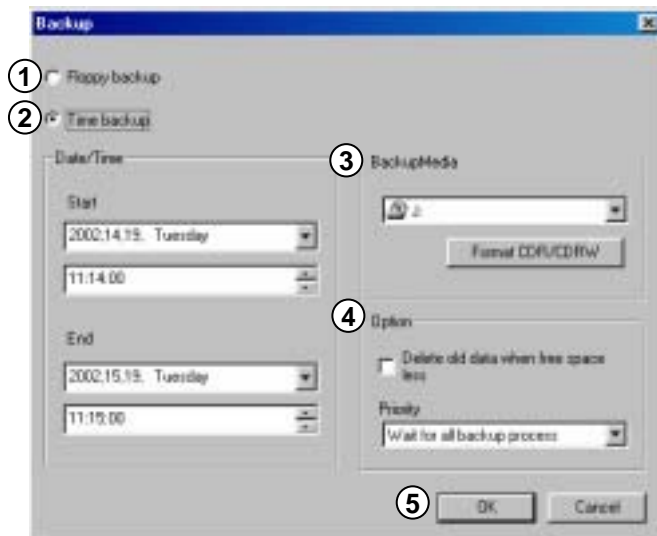


Corrupted image



Uncorrupted image

How to backup large media



1 [Setup time for backup]

Select this function when you need to backup a lot of data like HDD, CD-RW, Removable Drive, Network Drive, Remote IP Drive along with floppy disk.

This is not a normal format like BMP or JPG but this is an unique DigiNet S/W data. Therefore, you can not check the data using the normal image so you have to use it with the software from the place you bought it from.

2 [Date/Time]

Select start and end time of backup data.

Time has to be setup before the current time. If the time was set after the present time, backup will not work when you select [OK] button.

3 [Backup Media]

[Select Drive]

Select backup data from its storing media.

You may select HDD, CD-RW, Portable drive, Network Drive, Remote IP Address except floppy disk.

[Format CDR/CDRW]

- This is used when you select CD to backup data.
- If CD was not formatted, use Direct CD program for CD formatting process. When you select [Format CDR/CDRW], you can format CDR/CDRW media by Direct CD (Refer to page 38).

Direct CD program has to be installed in window in order to format CD.

4 [Option]

[Delete old data when there is not enough space]

This function will record data after deleting the old data when there is not enough storage space to backup the data.

[Selecting Priority]

Select the priority of backup data.

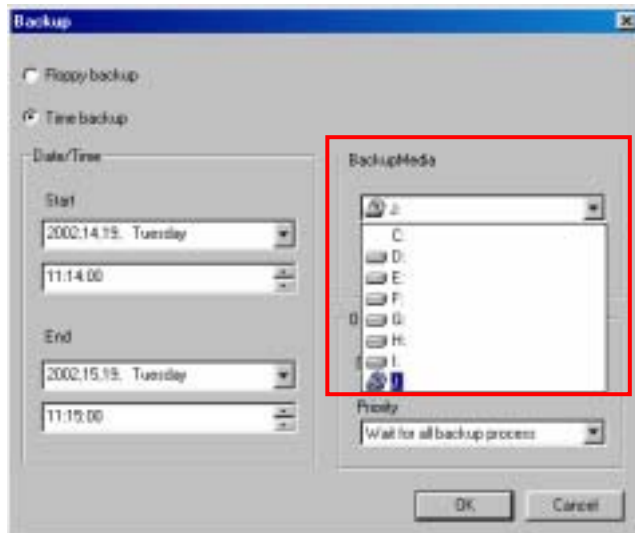
Wait until the processing work is done; start the backup after current backup and waiting data have finished their backup.

Start after the current work is done; when current data's backup is completed, do not back up the waiting data if the other data was selected first.

5 [OK]

Backup will start from the designated backup media drive when you click [OK].

Backup onto CD-R/CD-RW



1 [CD-R/RW backup]

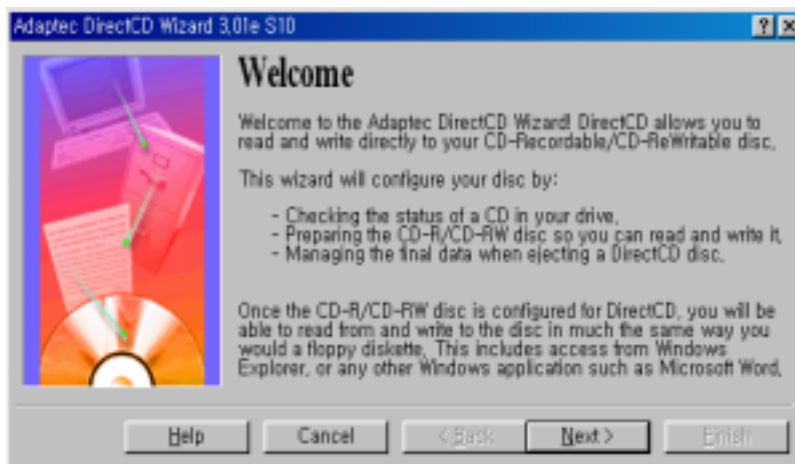
- Select [Select media] from “backup media” window.
- From “Select backup media” window, select [OK] button after selecting CD-RW drive which you will backup.
- You need to format CD in order to backup CD-R/CD-RW from DigiNet program.
- When the CD is unformatted or failed to Backup, please follow this step to Format the CD. (Refer to page 38)
- In order to backup on CD-R/CD-RW, **Direct CD** S/W should be installed on the system.
- If the CD is formatted, follow the same way with backup to HDD, or removable drives (DVD-RAM, ZIP, MOD, RB)

Formatting a CD using Direct CD

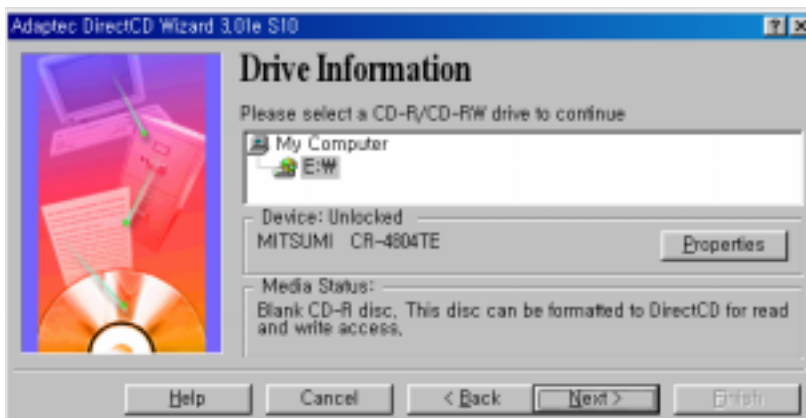
① [Formatting CD using Direct CD]

- When you try to backup on an unformatted CD or in case where the message of backup failure has shown, format the CD as follows.

- Insert a empty CD disk and click 'Format(CDR/CDRW)' in the 'data backup' window. Then following window will appear. Click next.

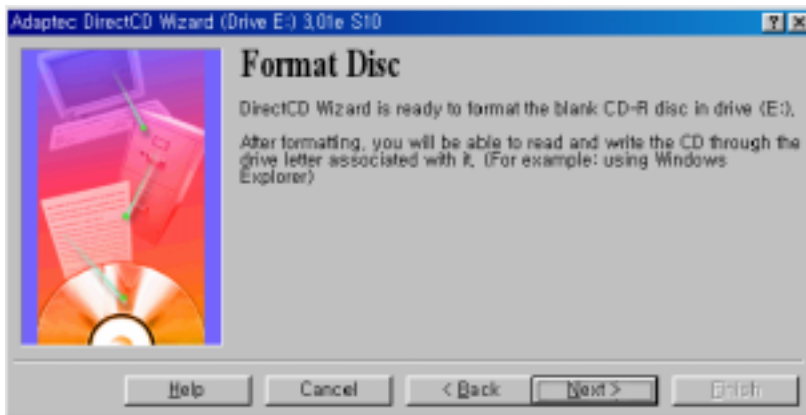


- This window shows the information of the empty CD. Click 'Next'.



- Format the empty CD disk. Click 'Next'.

Time to format (CD-R : 1 min, CD-RW : 25 ~ 45 min)

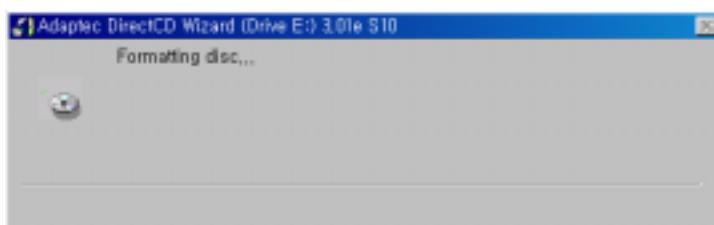


- Select the label for your CD i.e.: backup. (If you don't want to enter label, it's ok.) Click 'Finish'.



- CD-RW will start formatting CD.

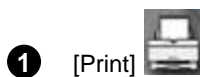
Approximate time to format – (CD-R: 1 min, CD-RW: 25 - 45 min)



- When the CD is formatted, follow the same instructions to HDD or removable drive (DVD-RAM, ZIP, MOD, ORG etc) to backup your data.

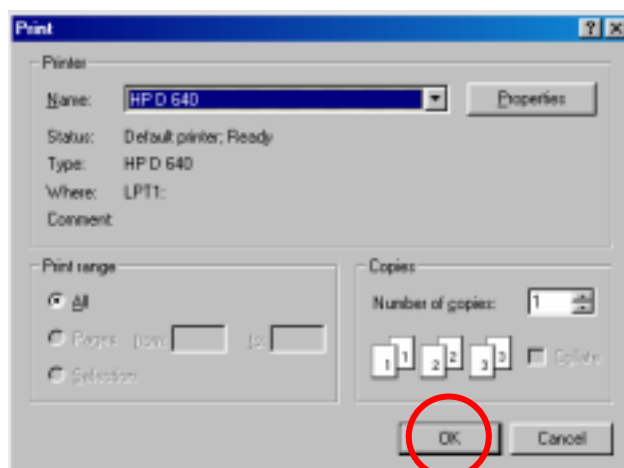
- If you meet other messages, refer to Direct CD manual.

8.5 Printing searched image

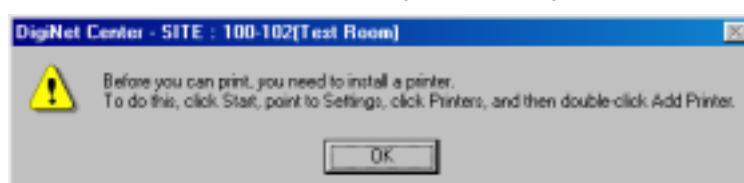


Print the selected image.

Printing is possible when you select [Print] button only with one magnified screen
(Print after adjusting size and brightness.)



⚠ If the printer is not installed, following error message appears.



*** Check out if your printer is configured properly when you can't get it printed out.**



Installing printer

1. In Windows 98 click Start → Setting → Printers.
2. In Printers window, select and click Add Printer.
3. In Add Printer window, click Next.
4. Click the manufacturer and model of your printer.
5. Click available port.
6. If your printer is not listed on screen, consult with your printer dealer.

*** Make sure that the printer cable or power line is properly connected.**



Size of printed image

- Basically, the magnified image will be printed in the same size.

9. Selection between PAN/TILT & surveillance mode



How to setup

- 1 Left double click will magnify the screen and right click on the channel bring you to PAN/TILT mode (Only when PAN/TILT camera is used)



- 2 To switch to display mode click this button.



Screen of Pan/Tilt mode

9.1 How to Control PAN/TILT Mode



- 1** Display current date and time
- 2** [POWER]
 - camera power
- 3** [WIPER]
 - camera wiper
- 4** [LIGHT]
 - camera light
- 5** [AUTO]
 - On/Off of the AUTO PAN/TILT camera
- 6** PAN/TILT control
 - controls up, down / left . right
- 7** [FOCUS]
 - controls focus
 - (This is not used for auto focus lens.)
- 8** [ZOOM]
 - controls ZOOM
- 9** [DIS]
 - This is used to go back to surveillance mode from PAN/TILT mode.
- 10** [Go-To]
 - Dome camera moves to the configured position on each buttons in "Go-To".
 - To activate "Go-To" function you need to click **Go-To**, then 'set-up' button will look like this. **Set up** Then, move the camera to the desired position and click the number to assign to **[Numeric Keypad]**
 - This can be only used when PAN/TILT type (that is applied to site) supports [Go-To] function (Most Speed Dome camera support this function but some models will not support.
 - This function will not work with normal RX Receiver.



You need the same number of RX RECEIVER(KRE-301 or KRE-302) to control PAN/TILT camera.

10. Site DVR setup



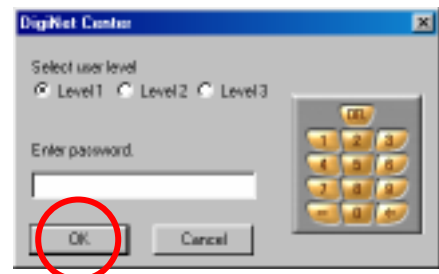
How to setup

1 [Setup]



Click this button

2 Type your password and click [OK].



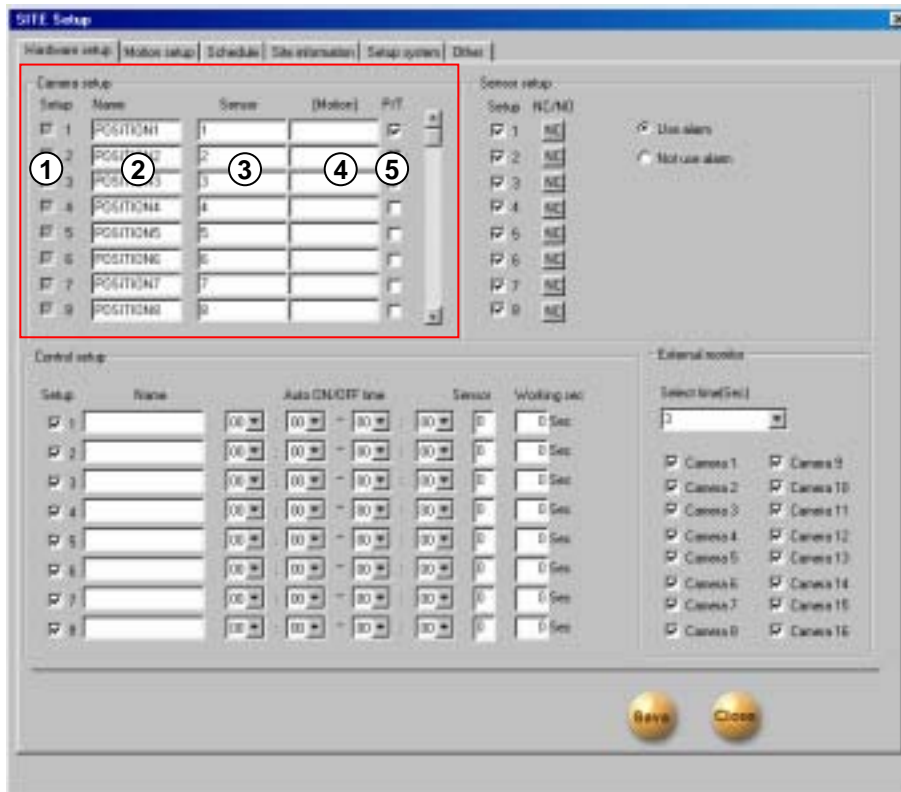
3 [Close]

Select [Close] to end Setup



10.1 Hardware setup

Camera setup



1 [Setup]

- Check on the camera you want to use.

2 [Name]

- Put the name of the place where you installed camera.
Ex) Parking lot, entrance etc. (up to 14 characters)

3 [Sensor]

- DigiNet has a motion detection function. You can attach external sensors from 8 to 16.
- If the related external sensor starts working, connected camera starts recording.
- Input the sensor number you wish to use (Sensor number that's related with each camera).
- If there are a few cameras, you can separate by comma.
- This is not required on motion detection mode.

Ex) If you want to store an image from number 1 camera while number 2 and number 3's external sensor is working, input "2,3" on number 1 camera's "Link sensor" list.

4 [Recording with Motion Detected channel]

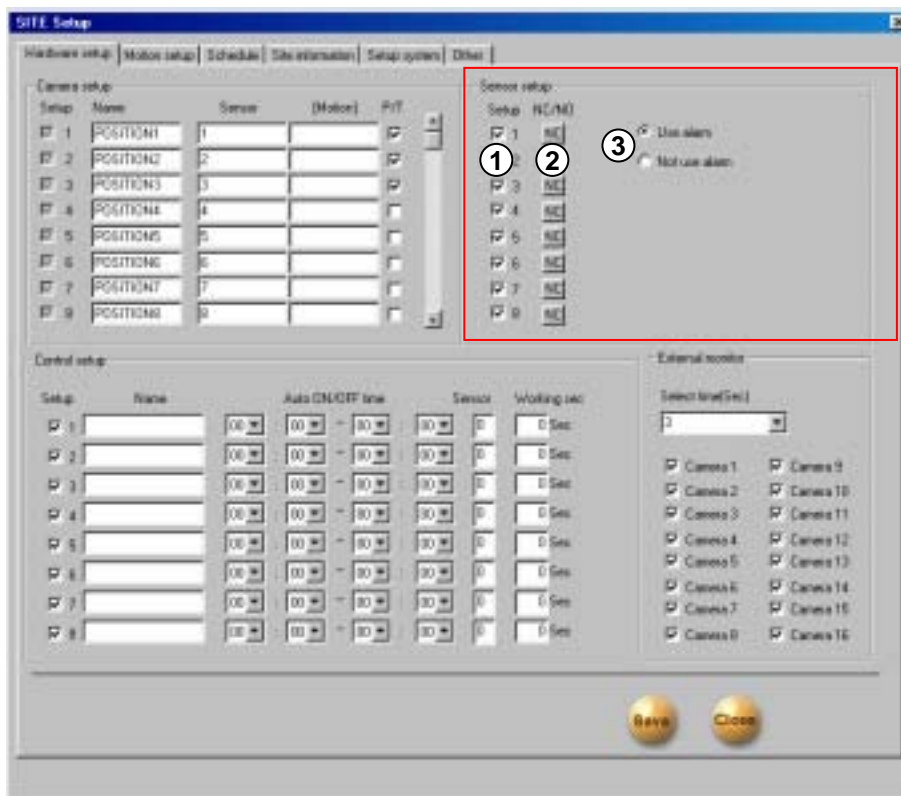
- When a camera detects any movement, system records it's linked channel as well.
- From "Recording Schedule" tap, record setting must be under Motion Detection mode for inputted specific camera number. If it is set on 'Continuous recording', this function is not activated.
- Input camera number of related camera that will detect and record related motion at the same time.

Ex) When camera number 1 and number 2 capture any motion and you also want camera number 3 to record it as well, just input "1,2" to "Related Motion" blank space under camera number 3.

5 [P/T]

- Check this when you use PAN/TILT camera.
- Selected camera has <Pan/Tilt> on top of the image.

External sensor setup



1 [Setup]

Check on the box. The number of installed sensor and input connector should be same.

2 [NC/NO]

Choose the sensor type.

Clicking will change to [NC]<-> [NO]

([NC] is set to default)

NC : Normal Close Type Sensor

NO : Normal Open Type Sensor

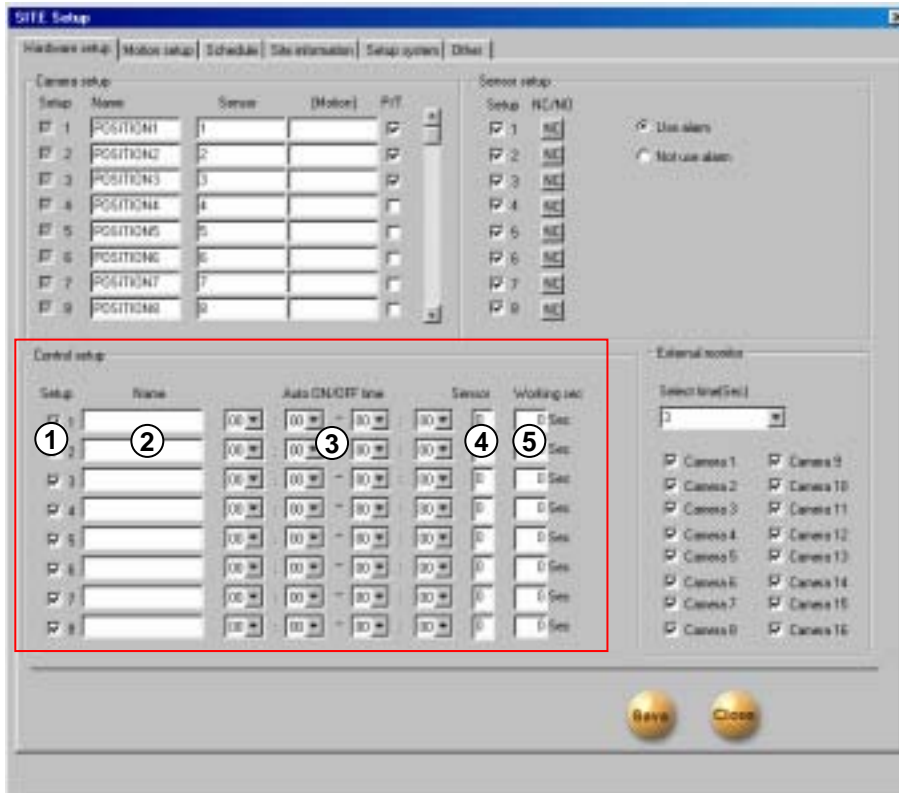
3 [Choosing Beep Sound]

- Beep sound will occur when a signal is detected within selected time. Speaker that is located inside the system will let you know site's situation by the sound.

- Click on [Choose Beep Sound] if you wish (Beep sound occurs only within the time you set).

- Beep sound will not be operated when a corresponding number of recording schedule is set to "Continuous Recording".

Control Setup



- 1** [Use]

 - Check the output no. to use
- 2** [Controller name]

 - Enter controller name to use
 - can be extended up to 14 characters in English.
Ex) Siren, lamp, or alarming lamp.
- 3** [Automatic ON/OFF]

 - You can enable control output in the desired time.
 - It works in the desired time and the default time is between 00:00~24:00.
- 4** [Linked Sensor]

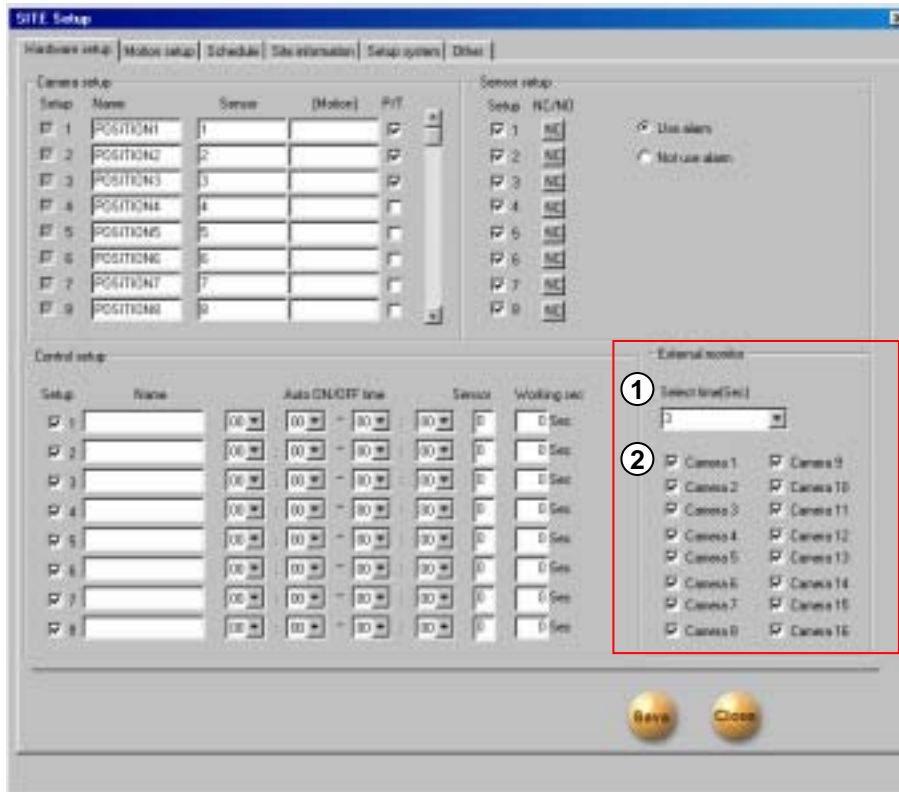
If you want the controller to work automatically, enter the sensor to connect to it.

Ex) When operating sensor number 2 while sensor number 1 is operating, input "1" under related control output list.
- 5** [Working Time]

 - Enter the working time of control output in sec.
(The maximum is 3600 sec and default is set to 0 sec)

External Monitor

External monitor is used with home TV or normal analog monitor to receive and produce image output from DVR



1 [Sequence Time]

- Set the sequence dwell time to move to next screen in sec.

2 [Camera 1~16]

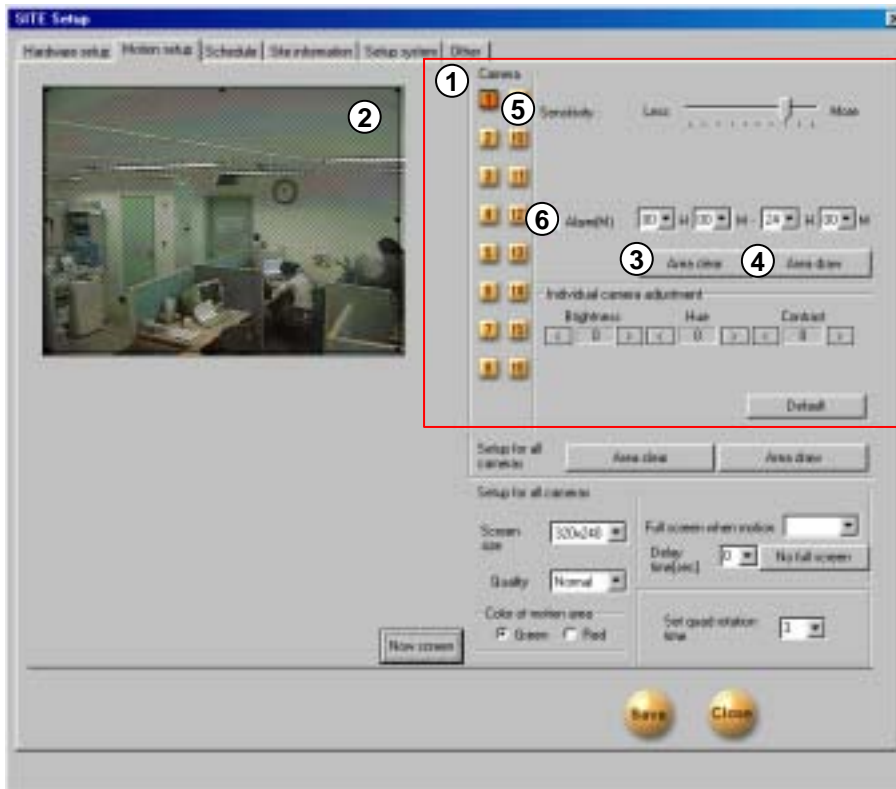
- Select the camera to display on external monitor.
- The image will be selected automatically and displayed according to the sequence time.



Image from external monitor's output uses Split Screening Method instead of Consecutive Conversion Method when using models like DigiNet-3416 and DigiNet-34216. It might not indicate set item for external monitor.

10.2 Motion Detection Setup

This function enables you to record any activity without the need for external sensor.



1 [Camera]

- Click the camera you want to set up

2 [Detection Area]

- To assign the detection area, place the mouse cursor over the desired area, drag it until your aiming area is fully covered. You can designate up to 5 different detection areas in each camera.

3 [Detection area select]

- Select full screen as motion detection area.

4 [Erase selected area]

- It clears all the detection area.
- To erase some part of the detection area, move mouse pointer out of the screen

5 [Sensitivity: sensitive ~insensitive]

This function is to control sensitivity in detection every time any movement is captured on camera.

Default sensitivity is “15” and it is the recommended value.

6 [Beep Sound Occurrence]

- When a motion is captured from related camera within selected time, speaker from inside the system will make BEEP sound to let you know the situation by selecting Beep Sound Occurrence.

- Click here to use Beep Sound Occurrence.

(It only detects the motion within the period of set time).

- If the relating camera is set to “Continuous Recording”, Beep sound will not operate.



7 [Screen Adjust]

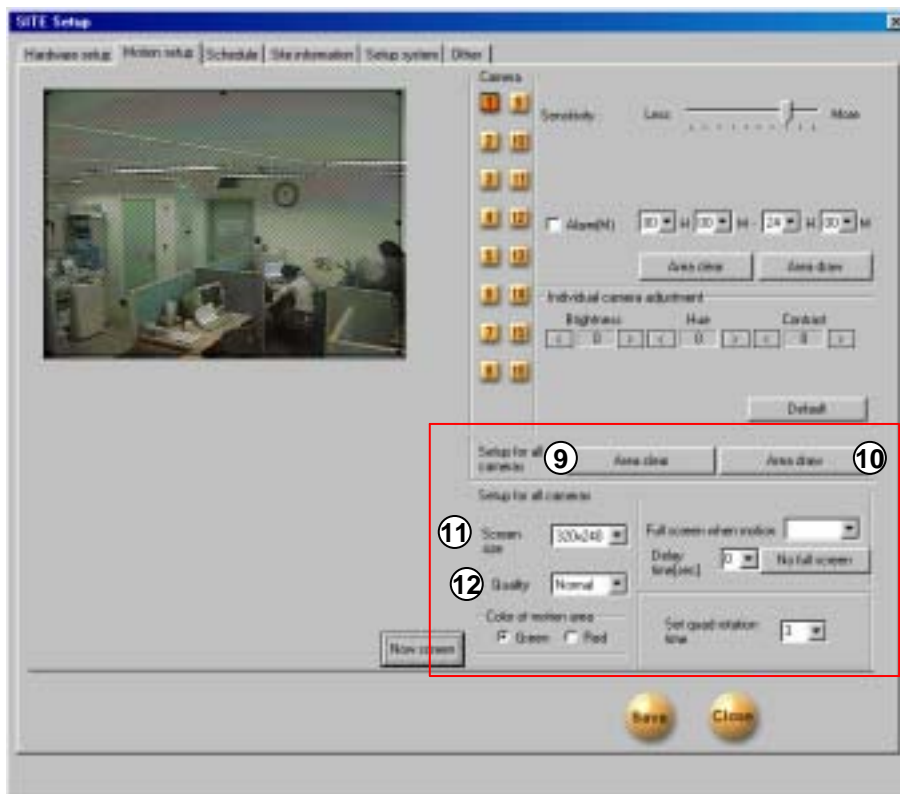
- Adjusts brightness, color, contrast.

(You need to adjust this according to the place where the camera is installed.)

- The default value is '0'. You can adjust it from -127~126.

8 [Default]

You can reset the setting into the factory value.



9 For all the camera [Erase selected area (Full)]

- Erase all the selected motion area on for all cameras.

10 For all the camera [Area Selection (Full)]

Designate full screen as motion detection area for all cameras

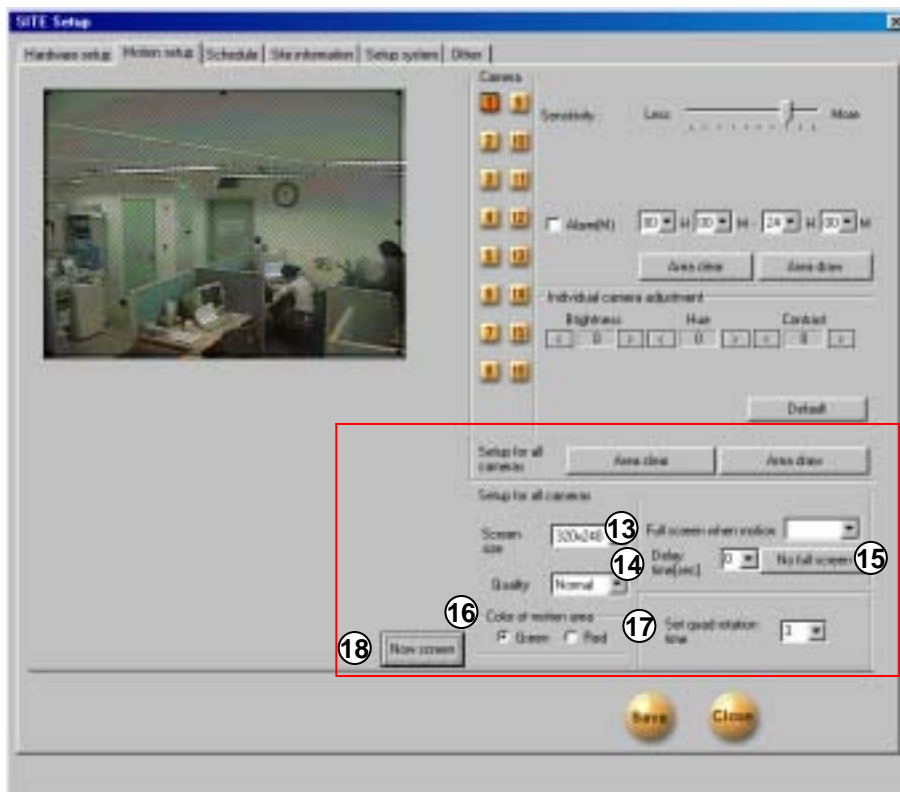
11 [Screen Size]

- Decides the size of a recording screen.
 - Recommended size is 320 x 240 resolution.
- (For 160*120 resolution Display & Recording speed gets better double, for 640 X 480 display quality is good but recording speed gets worse
- Default resolution is 320*240.

12 [Compression resolution]

- Choose screen quality you wish to record.
- Screen quality improves as you set to higher value but file size per screen frame will increase.
- Default value is 'Normal'.

Recording screen size and compression quality has a close relation.



13 [Zooming out when motion was detected] Full Screen

- When motion is detected, the screen will go from current to full size.
- Enter camera number.

Ex) For setting camera no.1, no.2, no.3,
input "1,2,3".



Caution : Put "," after camera no.

14 [Screen remaining time]

- It sets up the remaining time when activity was detected. Enter in sec.

15 [Cancel Screen zooming]

- It cancels Screen Zooming when activity was detected

16 [Detection area color setting]

- It decides the color of motion detection area in the display mode.

17 [Screen rotation by 4 channels (second).]

- This function rotates with 4 channels in a split screen consecutively.
- Rotation time should be set.

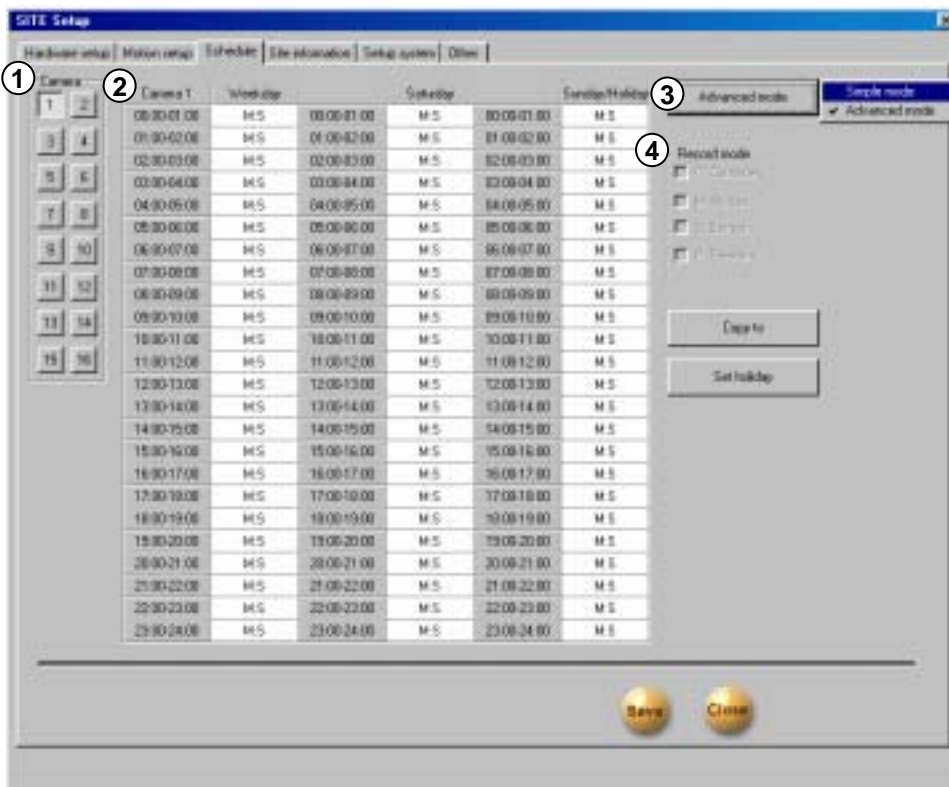


Caution : Be careful not to set above value as '0' second. The 4 screen division will change too fast on 0 sec.

18 [Receive current image]

- It shows the current site's image again.
- When setting motion detection after connecting to center Site, it shows the initially displayed image and this function is to display it to current image.

10.3 Schedule Setup



1 [Camera]

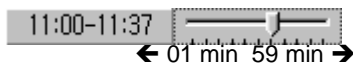
- Select camera number.

2 [Setting recording type]

This function is to set selected camera's recording type by each day and time.

Select time of the day and select (drag) the area and then select recording mode from [Record Mode].

If you need to set minutes too, double click on corresponding time and you will see a picture that looks just like below. Drag either to left or right.



3 [Simple/Advanced mode]

This function lets you to select by minutes instead of hours depend on recording mode.

A pop up menu will appear if you click [Simple mode] on the right hand side of corner. Time setup selection is depend on mode type.

[Advanced mode] gives more option for time setup. You can set different time for each day.



4 [Record mode]

- This function is to set recording type along with day and time for selected camera.
- After choosing day and time from selected camera, selecting more than 1 record mode will change selected time setup within selected time.
- If you erase all the record type from [Record mode], selected setup time will change to no record mode.
- Default is 'Motion & sensor record' of 24 hour continuous record.

[Indication by record type]	[Supported record mode]
<ul style="list-style-type: none"> • C: Continuous Record • M: Motion Record • S: Sensor Record • P: Free Alarm Record 	<ul style="list-style-type: none"> • No record • Continuous record • Motion record • Sensor record • Motion & sensor record • motion & free alarm record • Sensor & free alarm record • Motion & sensor & free alarm record

[Continuous Record]

- This is used when continuous recording is done without motion detection.

[Motion Detection Record]

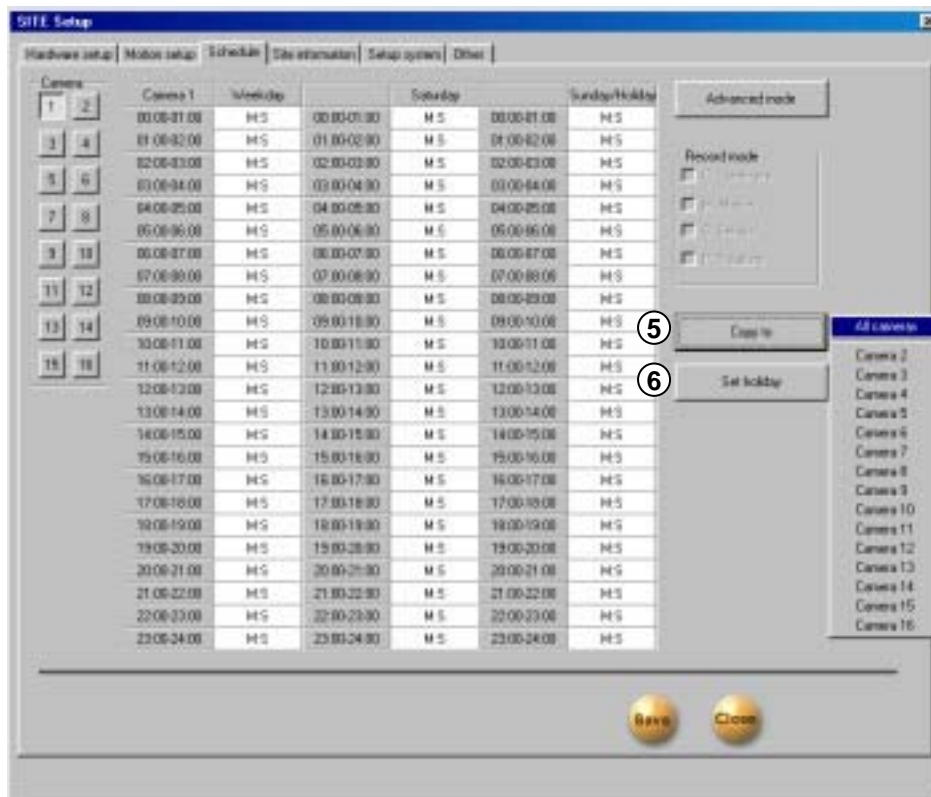
- This function records only when it captures any movement.

[Sensor Record]

- This function is to record by inputted sensor's signal.
- Sensor setup can be done by camera and use time. If sensor is captured within selected time, related camera's image will be recorded or related control will operate.
- Sensor input signal will be ignored if anything occurs outside the setup time.
- If related camera or time line is set to 'Continuous Record', then Sensor Record cannot be used.

[Pre Alarm]

- When a motion is captured on camera, then camera will record every moment of the motion occurrence in addition to five seconds before the motion was detected.
(But, recording speed may decrease if you setup several cameras with it).
- If the corresponding camera or time is set to 'Continuous Record', you cannot use Pre Alarm function.



5 [Copy]

- This is an application to copy and transfer setup information from currently selected camera.
- A pop up menu will appear on the right hand side when you click [Copy]. Currently selected camera will copy to camera you chose from the pop up list.

6 [Holiday selection]

You can pick any specific day (s) of the year and set it as holiday.

! Warning: You must press [Save] button from [Schedule setup] in order to store information on any changed holiday.

10.4 Site Info

The screenshot shows a software window titled "SITE Setup" with a menu bar containing "Hardware setup", "Motor setup", "Schedule", "Site information", "Setup system", and "Other". The "Site information" tab is active. A red box highlights the "Site information" section, which includes the following fields: "Site code" (containing "T08108"), "Location", "Model", "Distributor", "Sale Date", "O/Pan", and "Note". A circled "1" is placed next to the "Site code" field. A "Close" button is located at the bottom right of the window.

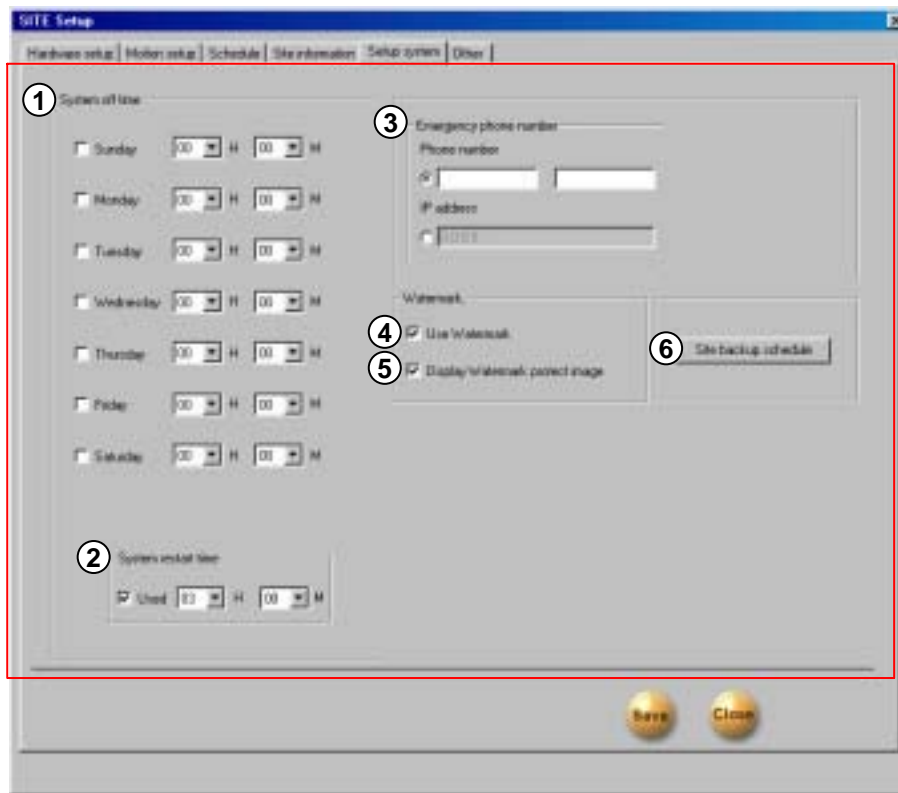
1 [Site Information]

- Enter site code, place, version, installation guide & date and Warranty date. Etc.
(you must enter site code.)



When you try to connect to site from center, system checks site code and password together. And if they are not identical, the connection will be disclosed.

10.5 System Setup



1 [Automatic system off]

- Assign the time to turn off by checking on the desired date and time

2 [Time to reboot the system]

- It sets up the time to reboot the system everyday automatically. (This is used for stable operation of the system.)
- To use this check on [Use]

3 [Emergency Phone number]

- You can register up to two phone numbers when you use dialup modem.
- When the first emergency phone number is unavailable to connect, system tries to connect to the second emergency phone number.
- [Emergency IP Address]
- When you use Center over the LAN, enter "Emergency IP Address"

4 [Water Mark]

[Using Watermark]

You can put Watermark authentication onto the image. If you check on the box you can use Watermark function.

5 [Displaying "Watermark"]

Displays "Watermark" on the image.

If you check on here the image will have Watermark authentication mark.

6 [Setup site backup]

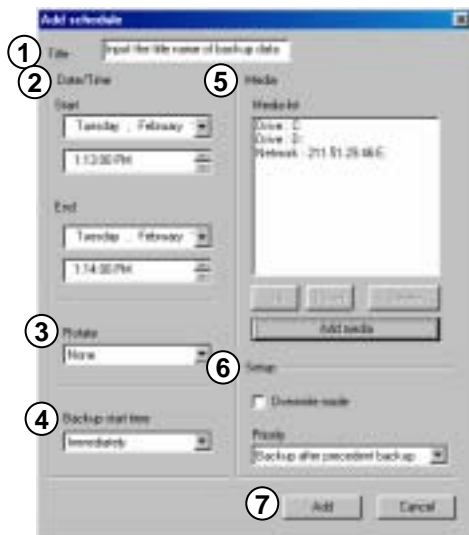
- This function is to setup backup schedule for backup data from the Site including backup date/time, rotation repetition, backup media, and order of priority (Refer to Page 60).



What is watermark ?

BMP and JPEG images can be modified. To ensure the original is a true original that has not been modified, special protection called 'watermarking' is encoded onto the image. Any changes to an original image, including just one pixel, will inform you that the image has been modified.

Add Backup Schedule



1 [Title]

- Type additional title in backup schedule setup list.

2 [Date/Time]

- Choose the Start and End date from the backup data.
- Time should be setup beyond current recording time.
- Setup time will be ignored if the recording time was set earlier than the current time.

3 [Rotation option]

- There is NO designated date/time in year/time in month/time in week so you can set the rotation time.
- Backup schedule will only apply for one day if you select [None] for designated date/time.

4 [Starting time for backup after recording is done]

After backup data finishes the recording, this function lets you to designate the backup starting time after End time is set.

You can set it immediately and from 1 hour to more than 4 hours.

5 [Media List]

- Choose backup data to record it to backup media.
- Media list can hold up to 8 lists, when you fail to record it to an initial media, backup will start automatically to the next media.
- Selectable media types are HDD, DC-RW, portable drive, and Network drive etc but floppy drive is excluded. It means all of the write-recordable media which designates characters are supported by physical/logical media systems and you can select remote drive using IP address.

[Up/Down/Delete]

- Listed order for backup media can move from up and down. Also, selected media can be deleted.

[Add media]

- Backup data can add the media you will record.
- Maximum number of adding backup media is up to 8 (Refer to page 62).

6 [Setup]

[Old data is deleted when there isn't enough recording space available]

- Backup data will record old data if there is not enough recording space available to record continuously.

[Deciding priority]

- Designate backup data's priority.
- Wait until progressing work is done: If the backup data is working currently and not all the data have finished its backup, then all the data need to complete its backup before currently chosen backup to start.
- Start your backup after the current work is completed: When the current backup data is completed, go ahead and backup the data you selected before the data that is waiting after the current one.

7 [Add]

- Add the designated backup setup to backup schedule list.



1 [Local Drive]

You may choose HDD or removable drive (MOD, DVD-RAM, ZIP, USB HDD etc), CD-RW, Network drive.

Among the systems that are physically and logically installed, all of write-recordable media is supported.

2 [Remote Drive]

Using IP address, select this option where Center S/W is installed in remote area when backup.

In order to backup in the remote area using IP address, Center S/W need to be installed to remote PC or File server. When installing Center S/W, Remote Backup Server program should be executed which is provided together (Refer to Operating Center Manual Page 64).

In order to do the remote backup setup, Remote PC or File Server's IP location and password is required while Remote Backup Server program is executing.

Remote Drive

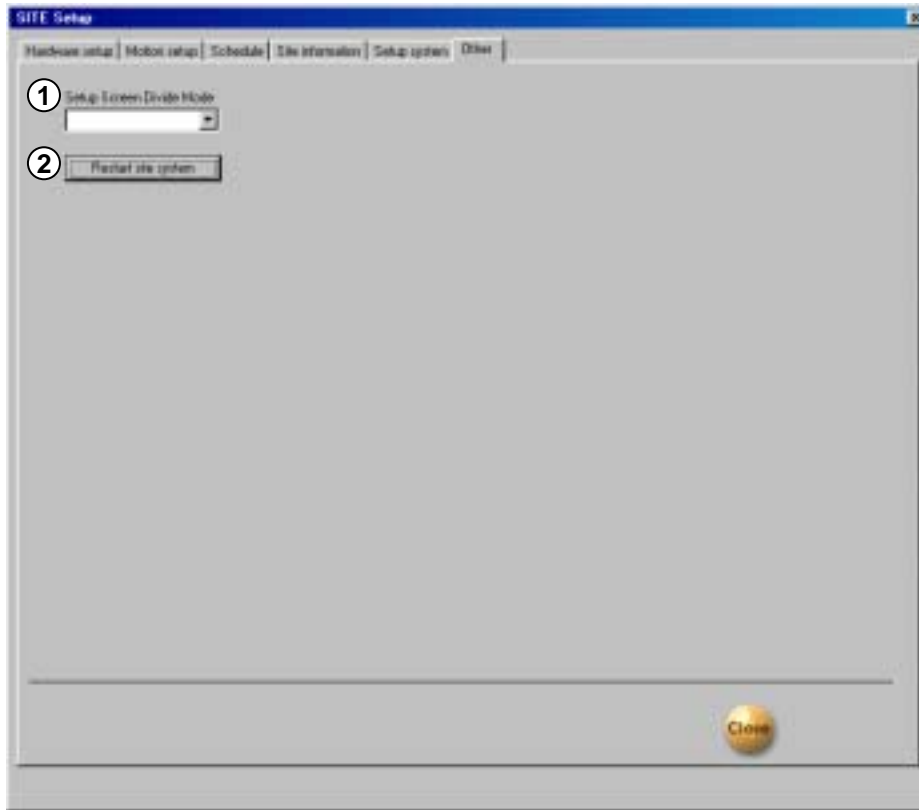


1 [Select drive]

Input IP address and password and select [Select drive].

In order to connect to Remote Backup Server for remote backup, remote IP address and registered password from Remote Backup Server program is needed.

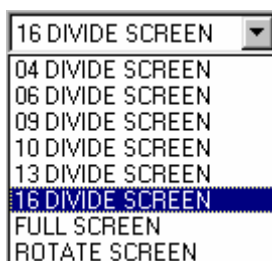
10.6 Miscellaneous



1 [Screen Divide Mode]

- Select Remote from the site for camera that is being detected.

(1,4,6,9,10,13,16 split screen, full screen magnification and possible to convert to 4 screen).

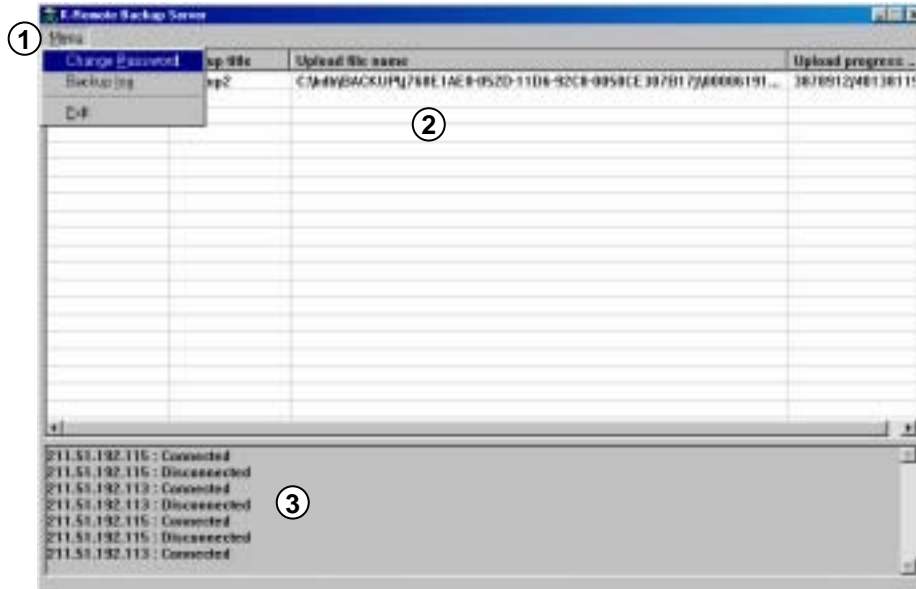


2 [Restart Site]

- Site's DVR system from center can be remotely restarted if necessary.

11. K-Remote Backup Server

- Using remote drive backup function from the site, this function receives data while backup is in process, and executes automatically when center program is executed.



1 [Menu]

[Change Password]

- When doing a remote drive backup from the site, you may change the password.

[Backup log]

- Using remote drive backup function from the site, you can check the backup data list and its information from remote backup server program

2 [Backup list]

- Using remote drive backup function from the site, shows current transmission of file size and file name, backup title, IP address of connected site, and site code in a list.
- Remote Backup Server program supports unlimited multi-connection and data transmission from connected site can be backup simultaneously.

3 [Connection list]

- If a connection was cancelled after the connection was made, this shows the IP address and a status of current connection.

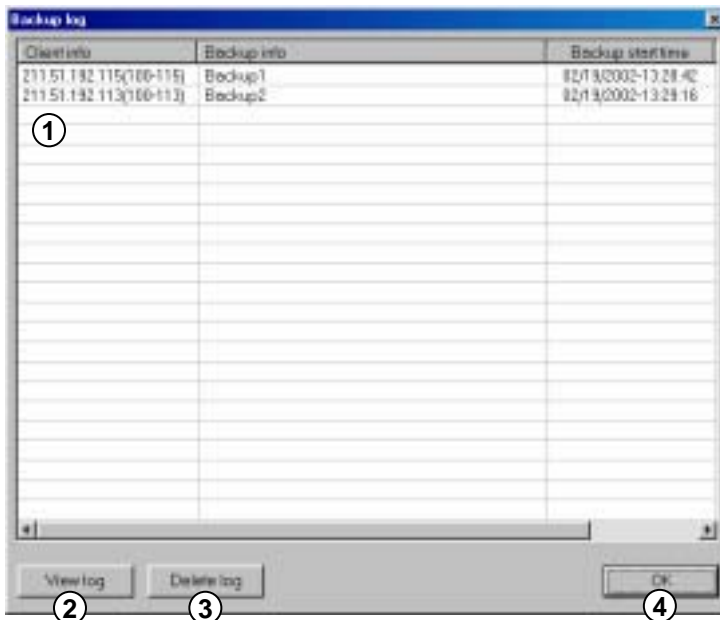
11.1 Change Password



1 [Change Password]

- In order to backup a data to a remote drive from site, you can select remote drive after typing IP address and password of where Remote Backup Server program is installed, and this function lets you change that inputted password.

11.2 Backup log



1 [Backup list]

- This function shows transmission start time and IP address of remotely backup data in a list of Site code.

2 [View log]

- You can see a detailed received information of transmittal data from selected site from [Backup list].
- You can also see the information from corresponding list by double clicking on [Backup List]

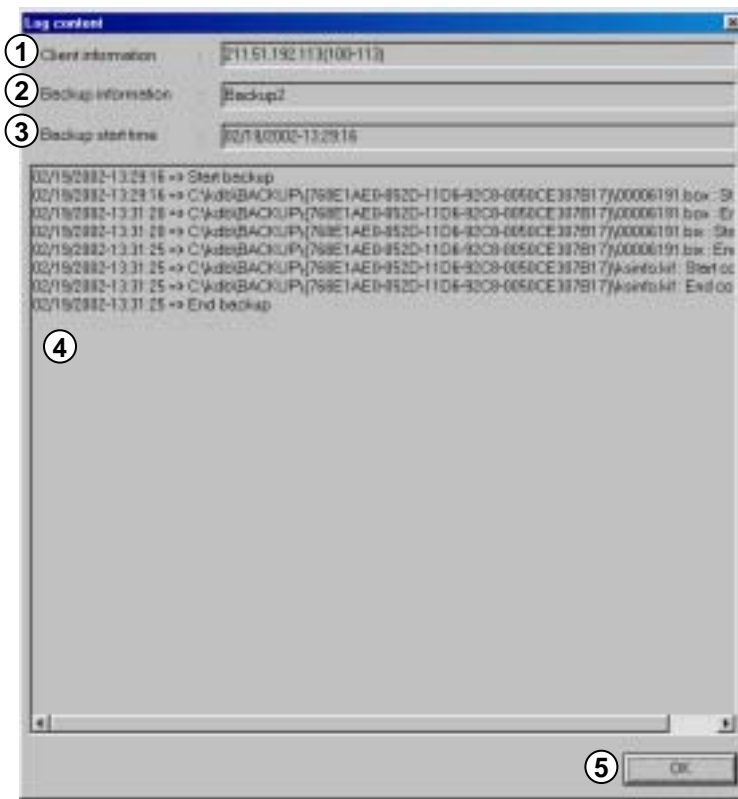
3 [Delete log]

- This function is to delete the received information which is registered in [Backup list].
- In order to delete registered list, select the list you wish to delete from [Backup list] then select [Delete log] button.

4 [OK]

- End [Backup log] widow.

View log



1 [Client Information]

- This shows remoteness backup data's IP address and Site Code from the site.

2 [Backup Information]

- When you setup the remoteness backup, this shows the title for inputted backup data.

3 [Backup Start time]

- This shows transmission start time of site's remote backup data.

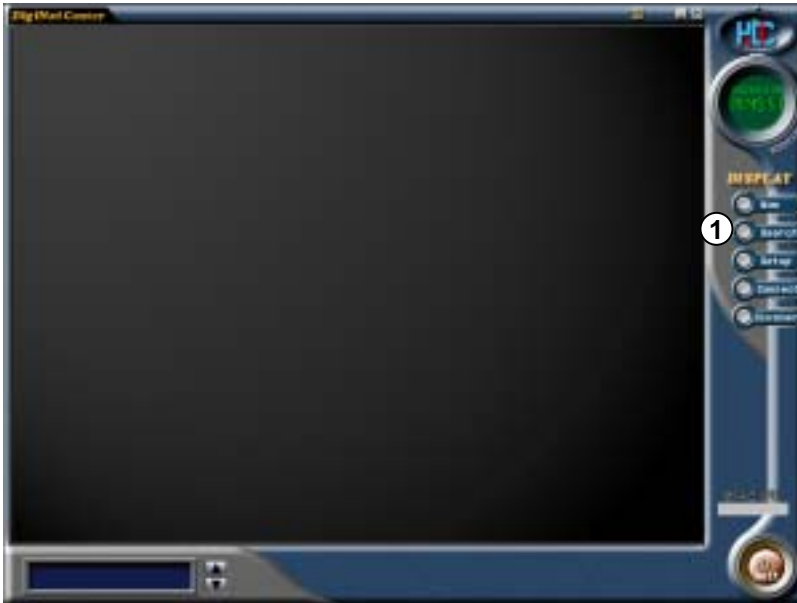
4 [File Transmission Information]

- You can see a status of detailed file transmission of site's remote backup data.
- Also, it shows transmission start and end time by each file and file name etc.

5 [OK]

- End [Log content] Window.

12. Searching Backup Data



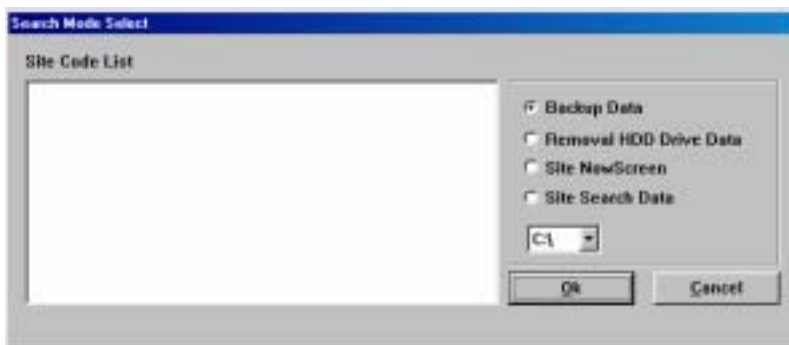
Setup

1 [Search]

- If you want to search for backup data, then insert the backup diskette without the connection and press this button.

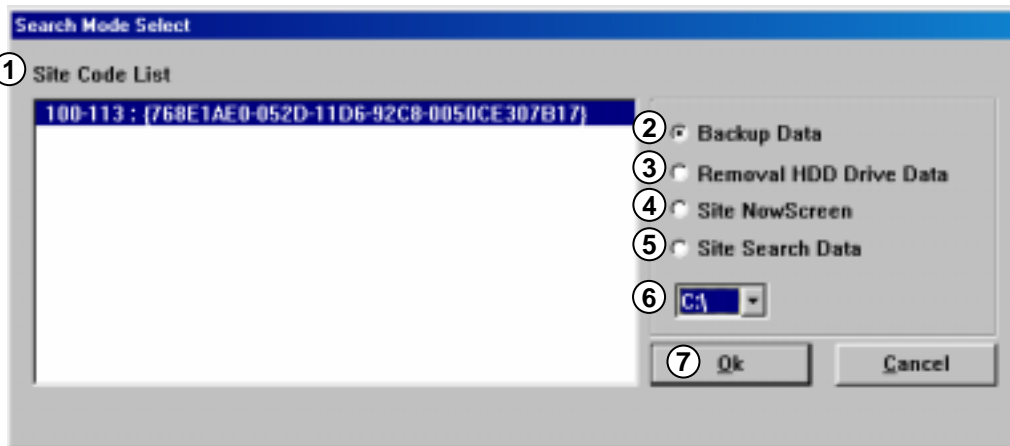


Following are the ones that can support data for backup. HDD, removable drive (DVD-RAM, ZIP, MOD etc) and CD-RW, and Network drive that can be recognized from Window.



2 [Search Mode Select]

- This window allows you to select backup data type.



1 [Site Code List]

- Backup data's Site Code and its key value will be displayed.
- It is possible to distinguish by Site Code when backup data is stored from many sites in backup medium.
- If there are several Site Codes, click on the corresponding site code you want to search for.

2 [Backup Data]

- Using backup function from site program, this will be used to search the stored data in backup systems like CD-RW, DVD-RAM, ZIP, MOD, USB HDD.
- Using remote drive's backup function or network drive connection, you can search for backup data that is stored in a specific drive.

(But, when doing a backup by connecting center's specific drive to network drive from site, it must own the whole corresponding drive).

3 [Removal HDD Drive Data]

- This is used when you search for data that was backup from removable hard disk

(Current Site program does not support removable disk, but it will be supported from later version).

4 [Site Now Screen]

- When displaying current image after connecting to site, this will search the stored data from Center again.

5 [Site Search Data]

- This will search the stored data from the Center again when you search the stored data from site after connection was made.

6 [Select backup drive]

- Select drive characters like hard disk which stored the backup data or CD-RW, DVD-RAM, ZIP, USB HDD, MOD etc.
- Drive character can support all drives that can be recognized from window except floppy disk drive.

7 [Ok]

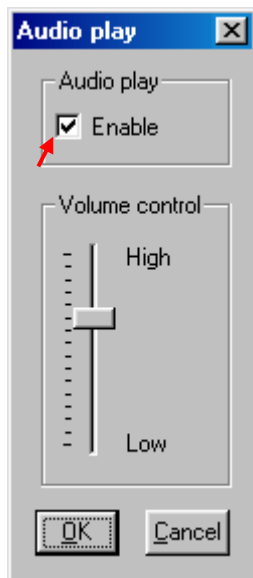
- Selecting [OK] button will change it to search screen to search for selected backup data.

[Search Backup Data]



When you finish selecting backup media's drive character that stores backup data and Site Code, select [OK] button and do the same search like you did to connect to site

(Refer to page 28).

13. Audio Replay



1 [Audio Play Configuration]

- This function is used when you search for backup data again or current image that is stored in center to produce voice output.
- When you click the 'Audio Play' icon,  The audio play configuration window like left appears. Select your settings for audio play back.
- Check on "Enable" on 'Audio Play' item. 
- Adjust the volume properly using 'Volume control'.

2 [Audio Play in Search mode]

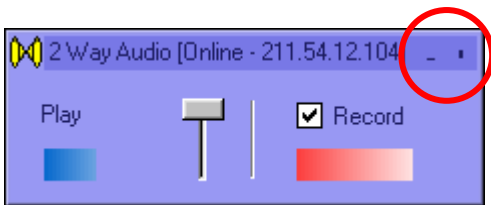
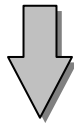
- Audio can be played only on one selected channel. You cannot play audio watching more than one channel. You should choose one channel to play audio.
- Only one channel that is setup for audio can be played on full-screen mode or searching in 1 channel mode. (Audio playback does not work on searching on multiple channels.)
- Video loss can take place within the first 1~3 seconds of play back, this is due to the video and audio synchronization and is not a fault.
- Audio can only be played back in normal forward play. Reverse Play or Frame Play is not possible.
- Skip and delay cannot be used with audio play back
- Voice playback will not be supported while searching after connection was made with the site, but the voice playback function will be supported while searching after the searched data is stored in center.

14. 2Way Audio



Connect 2Way Audio

- 1** [Connecting 2Way Audio]
- Both direction's voice conversation is possible when you connect from the Center to Site.
 - Select this button to connect 2Way Audio after connecting to site.
 - If you choose 2Way Audio while transmitting current image, it might temporarily delay image transmission to initialize sound card but this is not a fault.



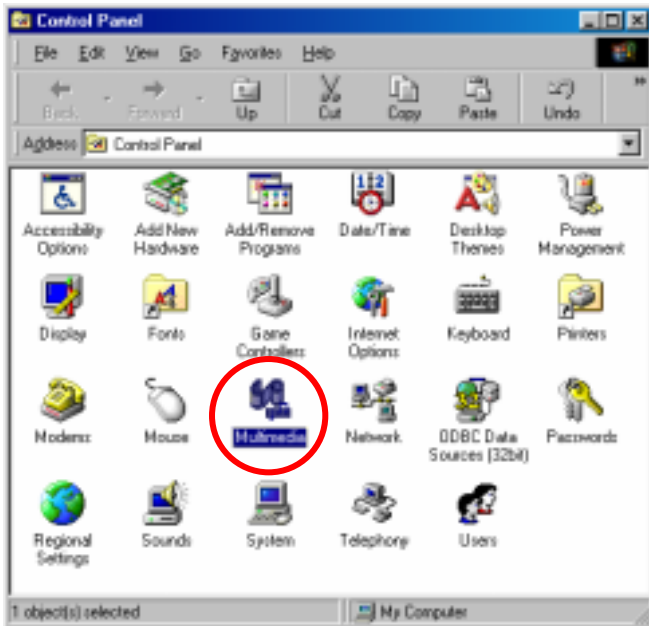
[Voice Receiver] [Voice Transmission]

- 2** [Both direction conversation for using 2Way Audio]
- You can hear a voice through speaker simultaneously with 2Way audio program execution and you can also transmit the voice to the site using microphone as well.
 - When 2Way Audio is connected from center while recording audio from site, audio recording from the site will discontinue while 2Way audio is connected, but if 2Way audio connection gets cancelled then site's audio recording will execute.
 - If several centers are connected to a site, an initial center may connect to 2Way audio. When connecting to several sites from center then the most active site may connect to 2Way audio.
- 3** [End 2Way audio connection]
- When you select window's upper right hand corner of [X (close)] 2Way Audio box, you can end 2Way audio function.
 - When you select window's upper right hand corner of [- (minimize)] 2Way Audio box, you can minimize audio window.

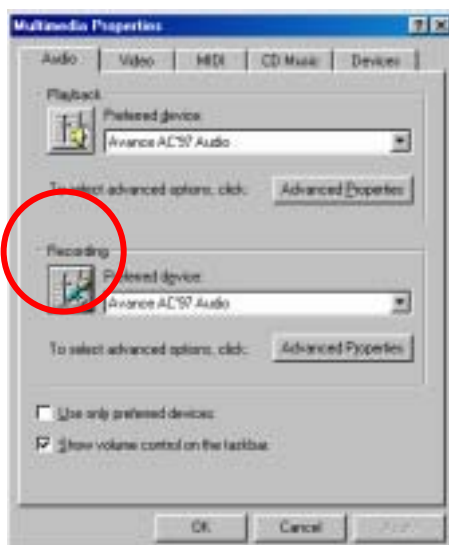
System Setup for 2Way Audio Function

1 [Setup volume function for 2Way audio]

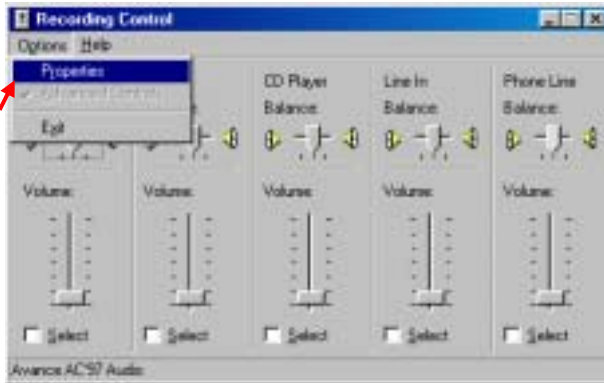
- In order to use 2Way audio function, you need to designate yes or no selection for 'microphone' to receive voice from voice input coarse from "Record" window.
- Execute 'Multimedia' from window's Control Panel.



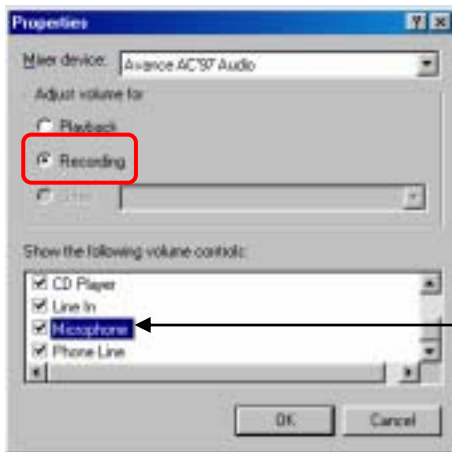
- Select [Record] button from 'Multimedia properties' window then execute 'Recording control'.



- Select 'Option → Properties' when recording control window is executed.

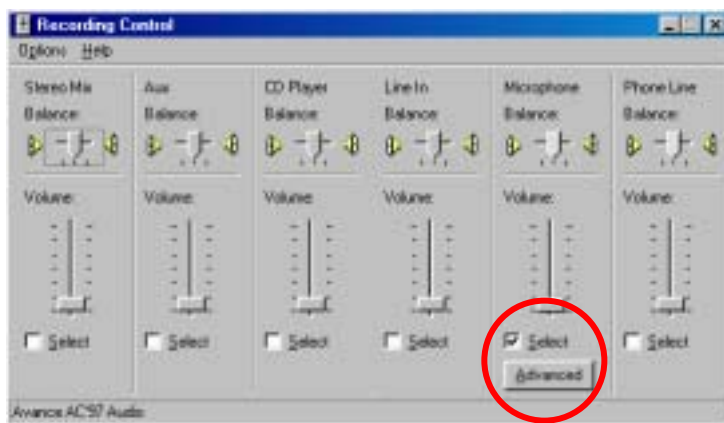


- Select 'Microphone' from "Properties" window and click [OK].



- Select 'Microphone' from "See following volume control" list then click [OK].
- It should be setup as 'Microphone' from "Properties" window in order to use 2Way Audio function.

- When you select [OK] button, microphone item will appear as following (Recording Control) window. Select 'Select' from 'Microphone' item.

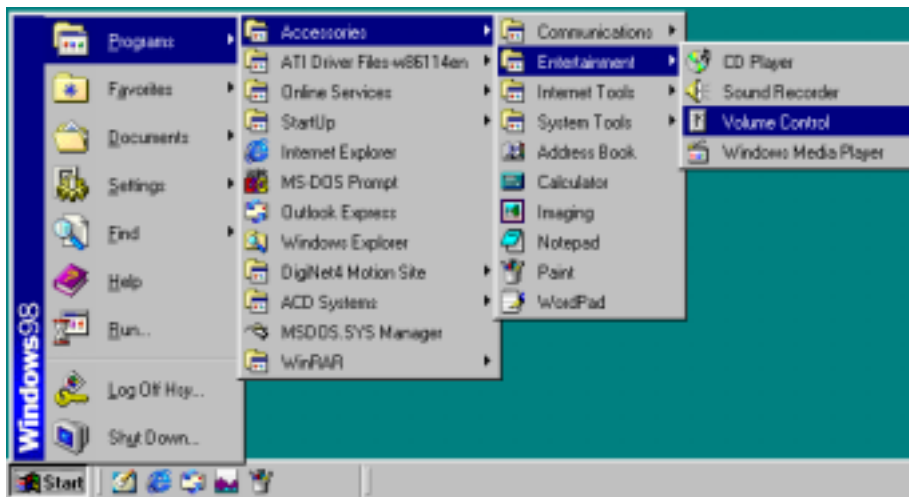


- When 'Select' is not checked from 'Microphone' item, 2Way audio function will not operate normally.
- In order to use 2Way audio function, above information should be applied to center and site simultaneously.

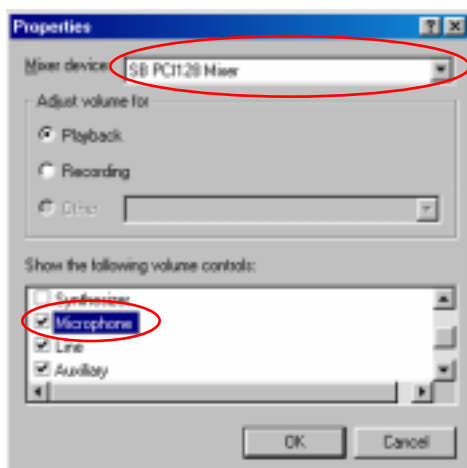
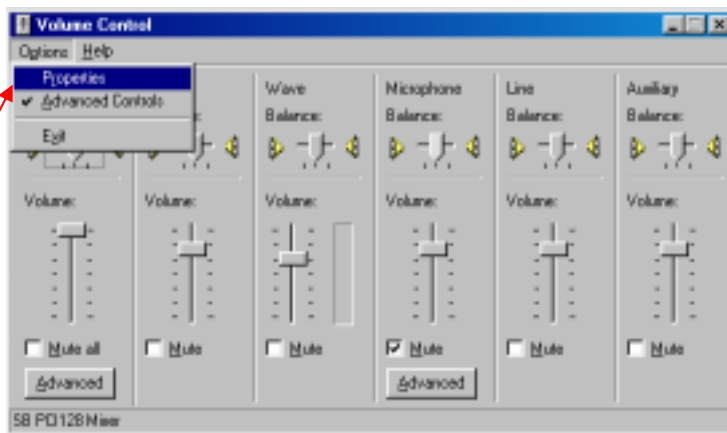
2 [Advanced Microphone setup for Microphone input]

- From a condition where volume control for microphone input is maximized but microphone's input signal is weak, following setup will amplify the input signal.

- Go to 'Start → Program → Accessories → Entertainment → Volume Control'



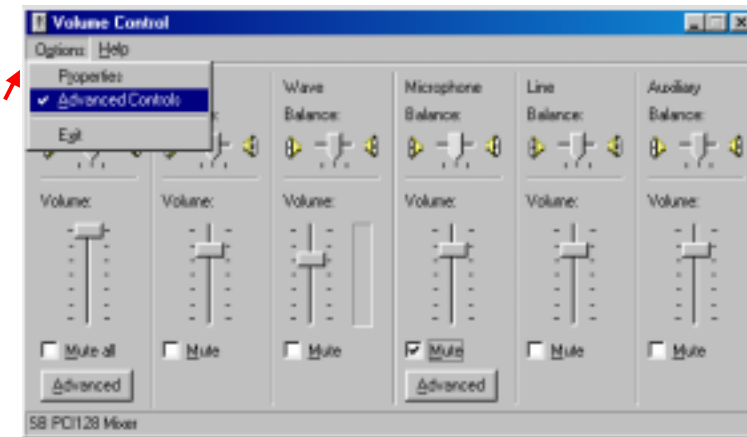
- Go to 'Options → Properties' then, below window will appear.



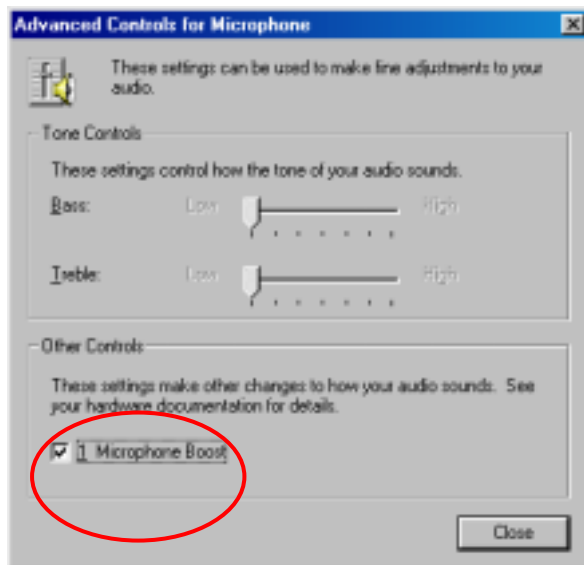
Soundcard mixer is installed in each system.

- In order to use 2Way Audio function, "Microphone" should be set from "Properties" tap.

- 'Advanced' button will appear under applicable columns when you select 'Option -> Advanced Controls'
- You can go to 'Advanced Controls for Microphone' by clicking 'Advanced' on 'Mic' taps in 'Volume Controls'.



- Please adjust the options to fit into your system and check the sound output from 'Other Controls'.



[Tips]



- Click on 'Mute' which is circled on the left picture, if you do not want any voice output from a speaker that was inputted to the microphone but record the voice only or if you just want the output of searched voice from the speaker only when installing a microphone.
- When the system doesn't support 'Microphone Boost' function, 'Advanced' button may not appear. In that case you can solve it by using a more sensitive amplified microphone.
- Sound card must be installed properly to use voice recording function.

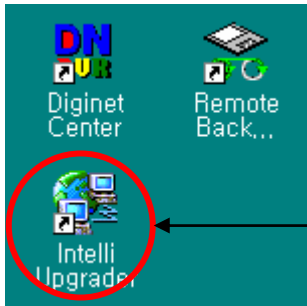
2Way Audio Function will not work if,

- Your voice will not transmit to receiver if 'microphone' is not selected from "Recording Control"
- 2Way Audio cannot be connected from Site to center
(2Way Audio Connection is possible from center to Site)
- 2Way Audio function cannot be used if center is not connected to site.
- 2Way Audio connection will end if you disconnect the most active site among several sites from center or switched to other site.
- If you end the connection for Center program then 2Way Audio function will end as well.
- You cannot use 2Way Audio function if you do not have sound card or if sound card driver is not installed.
- If the sound card does not support Duplex Audio, you cannot use 2Way Audio. In other words, you should be able to hear sound (Wave) when recording Micro Phone (Most recent sound card supports Full Duplex Audio).
- If you are using recording function from other software, you cannot use 2Way Audio function (Audio input by using microphone from sound card can only be used from one logical program at once).
- If the sound card does not want to support to mix several sound sources simultaneously then, 2Way Audio function will not operate normally.

(For example, when using Audio program while trying for 2Way Audio connection, 2Way Audio cannot operate normally if its sound card cannot support the function.

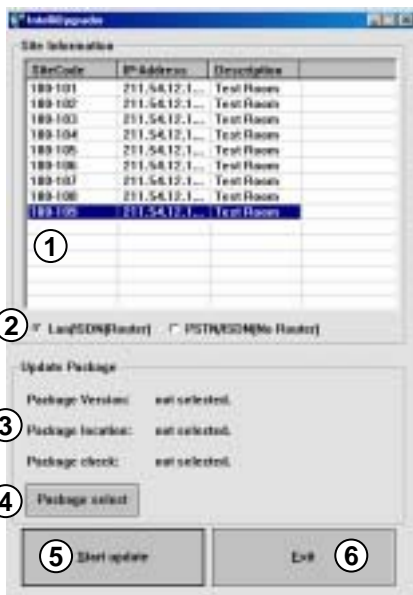
15. Intelli Upgrader

-Using IP address that is registered in connection list of center program, this function can upgrade DigiNet program to a new version that is remotely executing to a Site.

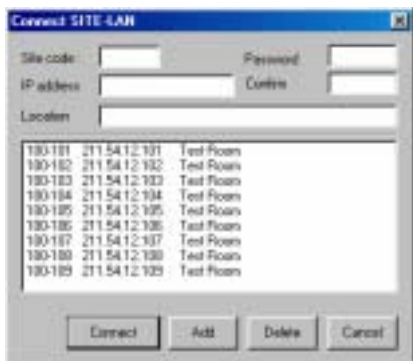


Execute Intelli Upgrader program that was basically provided when installing center program from desktop window.

15.1 Execute Intelli Upgrader



[Intelli Upgrader Execution screen]



[Site info from Center Program]

- 1 [Site Information]**
 - It shows connection information for center program's registered IP address, Site Code, and password etc. You can also choose the site you wish to upgrade for program.

Intelli Upgrader program does not support specific change or deletion, and input process on site information.

- 2 [Line Type]**
 - Possible use of line types are LAN, PSTN, ISDN, and its exclusive. When using ISDN or exclusive line, communication can be made using router.
 - It is possible for ISDN to communicate like PSTN by direct connection (dial type) without using router (Refer to page 23).

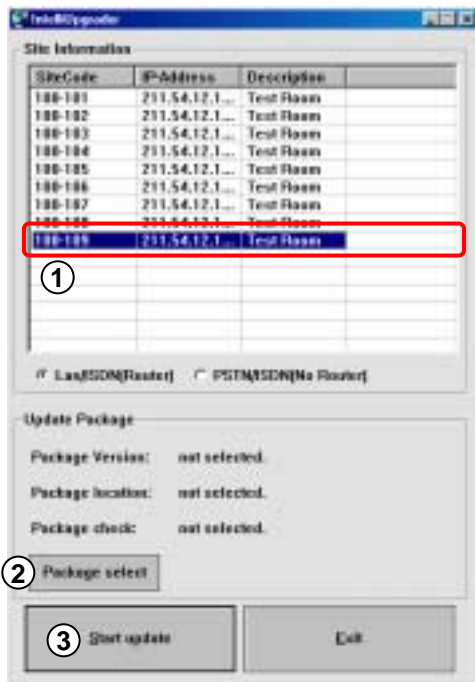
- 3 [Update Package]**
 - This shows program information on selected version of updated package program and original document storage folder, and integration testing result.

- 4 [Package select]**
 - Select the folder that has original document of update package program.

- 5 [Start update]**
 - Start the program upgrade of its corresponding site using selected site information and update package program.

- 6 [Start update]**
 - End Intelli Upgrader Program.

15.2 Remote Upgrade



1 [Site Information]

- Select the site you want to upgrade for program..

2 [Package select]

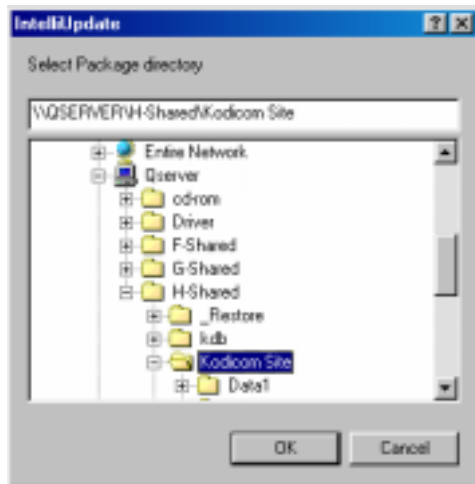
- Select [OK] after selecting new version package folder that is stored in Hard disk or its network folder.

- Designated folder must have package folder (Data1, Data2, Data3, Data-a, Data-b etc.).

Or all files in package folder must be included in one folder).

3 [Start update]

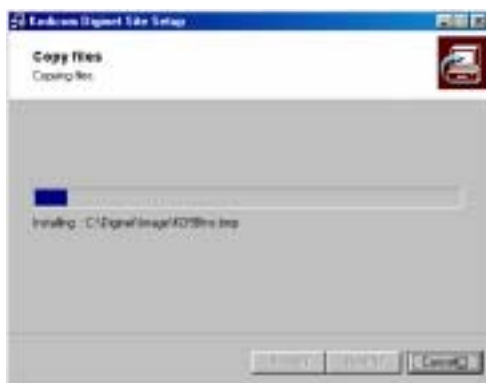
- Start upgrading corresponding site's DigiNet program after selecting site you wish to upgrade and package folder by pressing [Start Update].



- When upgrading to a new version using Intelli Update, upgrading does not support floppy diskette. Therefore, we recommend you to upgrade after copying the whole media on hard disk or diskette that can hold large volume.

- If there is no file or package folder in certain folder due to a wrong folder designation, or if the damage had occur to the file, then it will not be considered as a normal package so the program will not upgrade normally.

[New version of package program folder selection window]

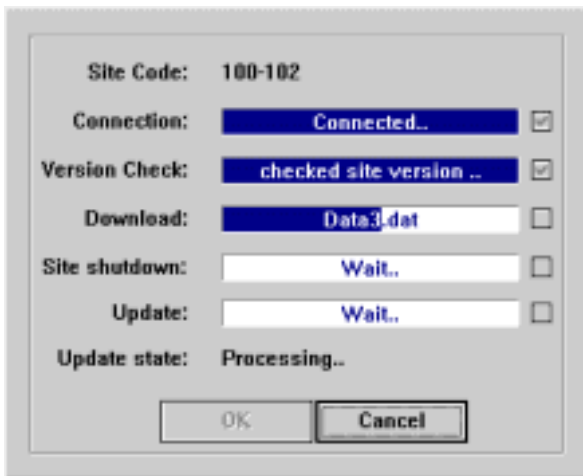


[Integration testing]

4 [Integral package test]

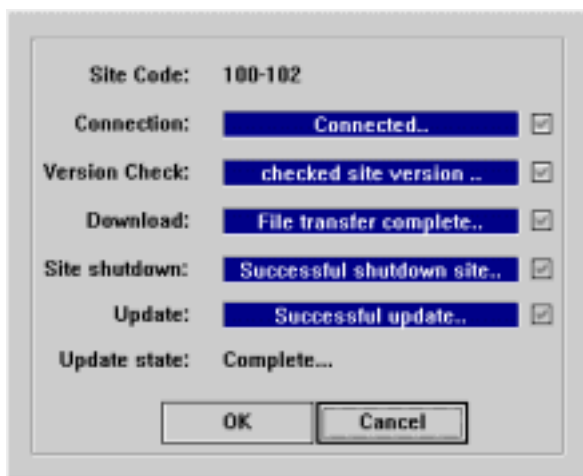
- When you designate package folder, program installation process will appear to do integration testing for update package program, but program will not actually be installed.

- 5 Upgrade will start after selected update package program is transmitted to site when you select [Start update].



[Program transmission and status of upgrading process]

- 6 When you select [OK] button after upgrade is completed, system will restart automatically and DigiNet program will execute again.



[Completed program transmission and upgrade]

2. Web DigiNet Manual

1. How to setup Web DigiNet	80
1.1 Setup Web DigiNet	82
2. How to connect Web DigiNet.....	84



1. Setup Web DigiNet

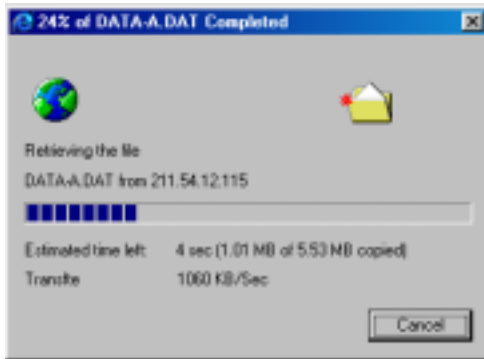


Download Web DigiNet

- 1 [Connect to Homepage]
 - Select the place you wish to connect.
 - In order to execute Web DigiNet Center program or to download, select temporary place indicated on homepage after connecting to linked web site.
 - If Web DigiNet is already installed, select installation place that is indicated on homepage to connect to site.



- 2 [Security Warning]
 - [Security Warning] message will appear when you connect to a specific site from homepage when Web DigiNet Center program is not installed or when installing for the first time. Select [Yes].



3 [File download]

- If you select Yes from [Security Warning] window, it will download installation file for Web DigiNet Center program. When download is completed, installation will automatically be executed.

- If Web DigiNet Center program is installed already, it does not download file and it will immediately connect to selected site after Web DigiNet Center program is executed.

- Installed Web DigiNet Center program can be deleted using "Program Add/ Delete" function from window's [Properties].

Warning

Some functions for Web DigiNet Center program among normal Center program are limited. If you install Web DigiNet Center program while Center program is installed already, then you cannot use some functions for existing Center program.

1.1 Setup Web DigiNet

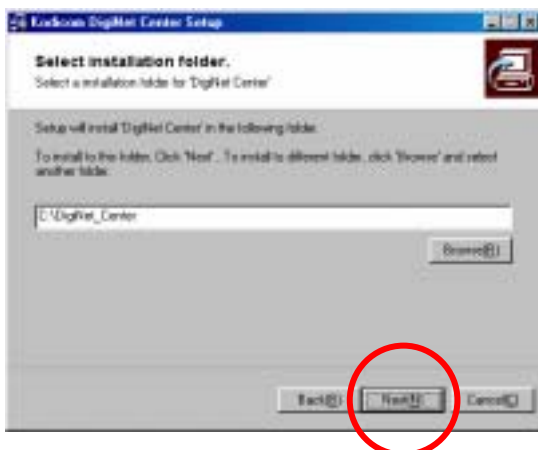
- 1 Select 'Next'



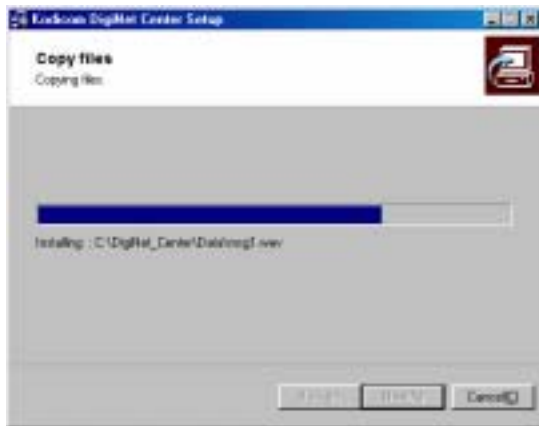
- 2 Check on 'I accept this License Agreement' and click 'Next'



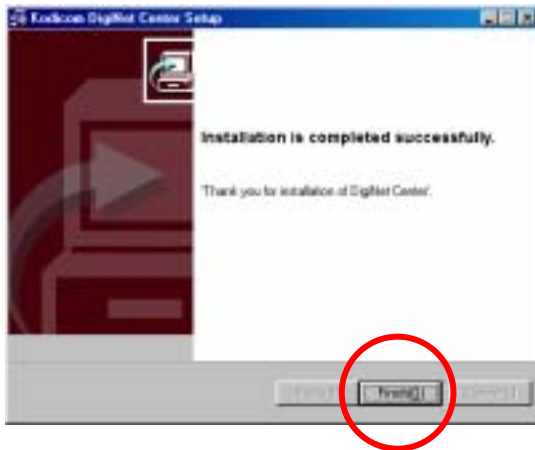
- 3 Select 'next' after selecting pass to install Web DigiNet Center program.



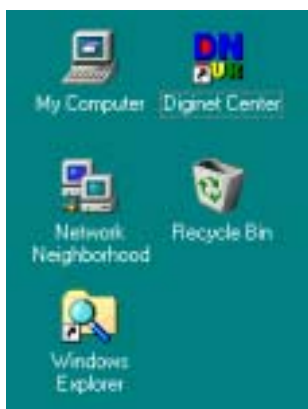
- 4 Program is being installed



- 5 Select 'finish' when program installation is completed.



- 6 Web DigiNet Center program's icon will be placed on Window's desktop. Click on any homepage you wish to connect then installed program will execute automatically and then it will immediately connect to selected site.



Tip

When you double click on Web DigiNet Center program's icon installed on desktop, you can use it the same way you use for normal Center program. But some functions for 2Way Audio or remote backup server, and remote upgrade functions that are supported from normal Center are limited.

2. How to connect Web DigiNet



Connect to Site

- 1 [Method to connect site]
 - If installation for Web DigiNet Center program is completed or installed already, select installation place for site indicated on homepage, then Web DigiNet Center program will execute and will connect to corresponding site. Current site's image will be displayed simultaneously with connection.

- 2 [Site connection]
 - Once Web DigiNet Center program is connected to site, site's current image will be displayed immediately.

[Tip]

Miscellaneous use method for Web DigiNet is identical with Center program's use method. Please refer to [DigiNet Center Manual] for more detailed information.

Warranty Guide

This product has passed thorough quality control and test, and if this get broken during normal use we provide 12 months warranty service.

Warranty Guide

- Check this warranty sheet first.
- Please contact the distributor after checking out any defect in the product.
- The standard for repairing, replacement or reimbursement follows Customer

Warranty Content

- Any defect under normal use within the warranty service period we give you free repair service according to the warranty sheet.
- We charge you with the fee of parts and service despite free warranty service period.
 1. Any breakage made without care.
 2. Breakage or trouble made by natural disaster.
 3. Breakage or trouble made by breaking the product guide or manual.
 4. Breakage or trouble made by wrong power voltage or frequency.
 5. When you want to reassemble for full system or replace parts within warranty service period.
 6. When unauthorized engineer modified or made damage on the product trying to repair it, we may charge you with the fee.
- We don't support the breakage after warranty service period. If the customer wants to get it repaired, we charge them with the fee.

Product Warranty Service Sheet

Product & model name		
Product Serial Number		
Distributor		
Date you purchased		
Warranty Period		1 year from the purchasing date
Customer	Name	
	Address	

- This warranty sheet may not be provided again.
- Please get this sheet filled when you purchase the product.
- You should show this warranty service sheet when you get a warranty service.

Kodicom Co., Ltd.

Address : 35-25 Kodicom B/D, Samsung-Dong, Kang Nam-Ku,
Seoul, Korea

TEL : 82 - 2 - 529-5768

FAX : 82 - 2 - 579-8419

Homepage : www.kodicom.com

E-MAIL Address : sales@kodicom.com

Korea Digital Communication Co., Ltd.